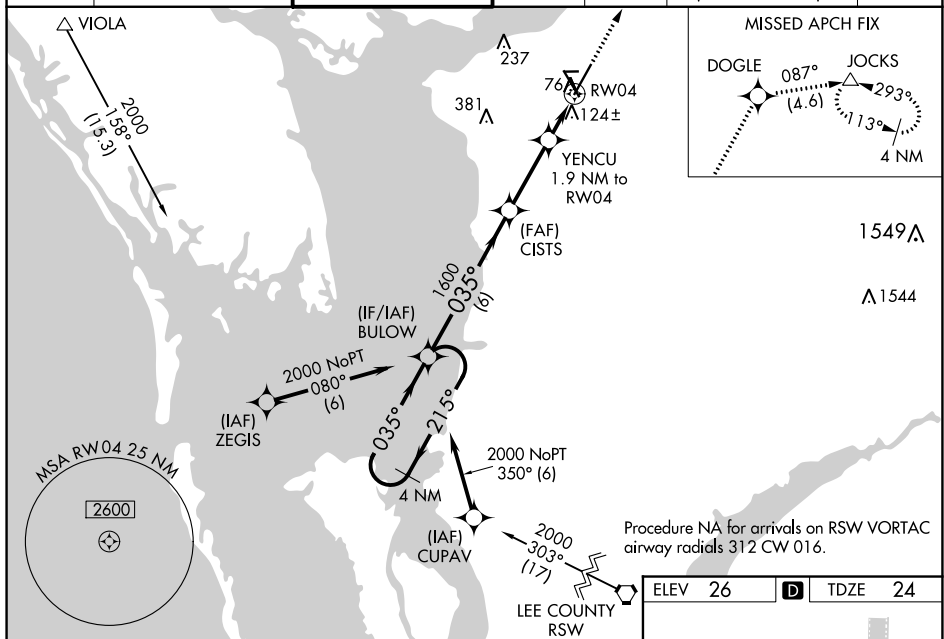
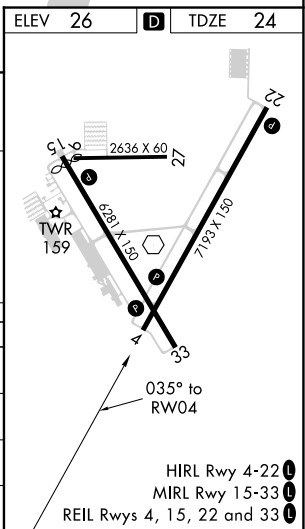


RNAV (GPS) RWY 4  
PUNTA GORDA (PGD)

**V** When local altimeter setting not received, use Page Field altimeter setting and increase LPV DA to 274 feet, LNAV/VNAV DA to 443 feet, and all MDA 60 feet; increase LNAV/VNAV all Cats visibility  $\frac{1}{2}$  SM, LNAV Cats C and D visibility  $\frac{1}{4}$  SM, and Circling Cats C and D visibility  $\frac{1}{2}$  SM. For uncompensated Baro-VNAV systems, LNAV/VNAV NA below 0°C or above 54°C.

**MISSED APPROACH:** Climb to 2000 direct DOGLE and track 087° to JOCKS and hold.

|                        |   |  |                          |                           |  |                          |
|------------------------|---|--|--------------------------|---------------------------|--|--------------------------|
| ASOS<br><b>135.675</b> | FORT MYERS APP CON ★<br><b>127.05 306.2</b> | PUNTA GORDA TOWER ★<br><b>121.0 (CTAF) 0</b> | GND CON<br><b>119.55</b> | CLNC DEL<br><b>119.55</b> | CLNC DEL<br><b>127.05</b><br>(When twr closed) | UNICOM<br><b>122.975</b> |
|------------------------|---|--|--------------------------|---------------------------|--|--------------------------|

[illegible]

SE-3, 31 DEC 2020 to 28 JAN 2021

SE-3. 31 DEC 2020 to 28 JAN 2021