

|  |                        |   |
|--|------------------------|---|
| WAAS<br>CH <b>69234</b><br><b>W05A</b> | APP CRS<br><b>050°</b> | Rwy Idg <b>5000</b><br>TDZE <b>17</b><br>Apt Elev <b>18</b> |
|--|------------------------|---|

RNAV (GPS) RWY 5

VENICE MUNI (VNC)

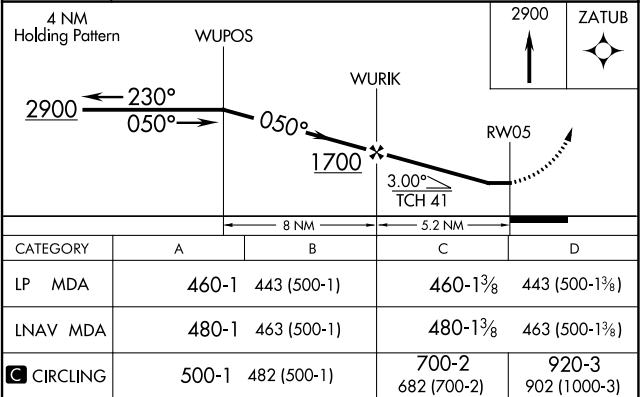
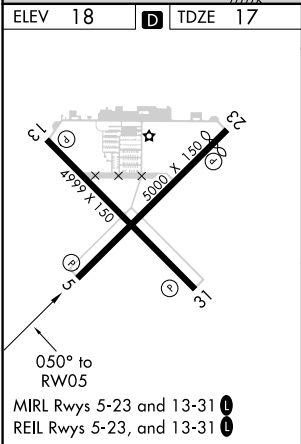
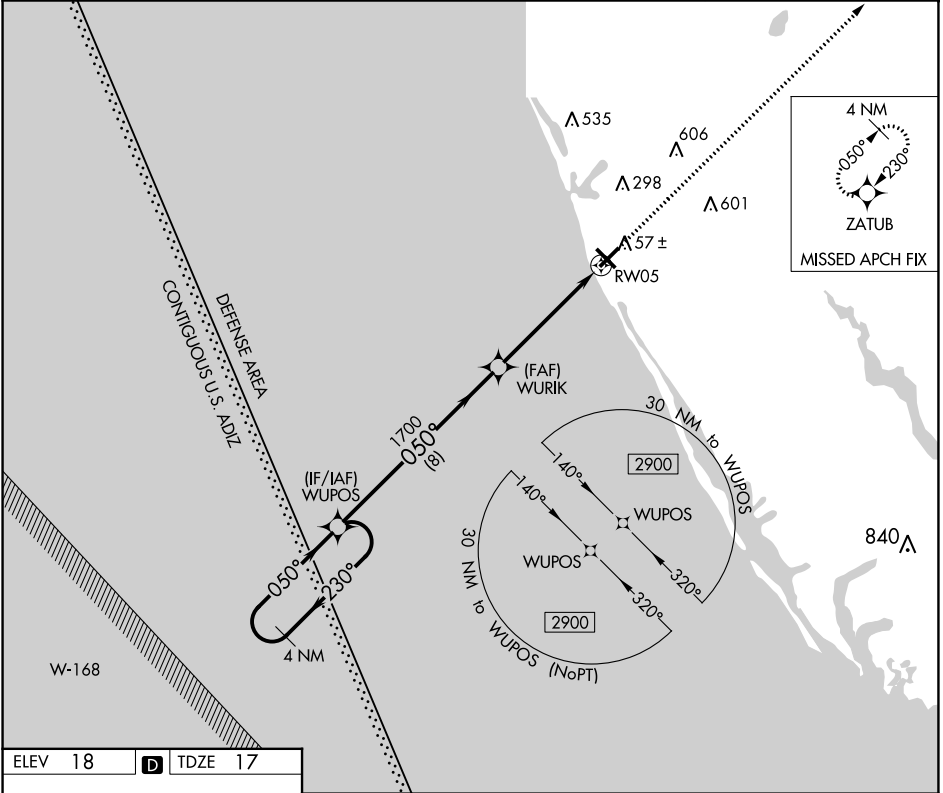
▼

▲

When local altimeter setting not received, use Sarasota altimeter setting and increase all MDA 60 feet, increase LNAV Cat C, D visibility 1/8 mile, and Circling Cat C visibility 1/4 mile. DME/DME RNP-0.3 NA. Helicopter visibility reduction below 3/4 SM NA.

MISSED APPROACH:  
Climb to 2900 direct ZATUB and hold.

|                          |  |                            |                                 |
|--------------------------|--|----------------------------|---------------------------------|
| AWOS-3<br><b>119.275</b> | TAMPA APP CON<br><b>119.65 353.575</b> | CLNC DEL<br><b>118.075</b> | UNICOM<br><b>122.725 (CTAF)</b> |
|--------------------------|--|----------------------------|---------------------------------|



SE-3, 31 DEC 2020 to 28 JAN 2021

SE-3, 31 DEC 2020 to 28 JAN 2021