

WAAS CH 78223 W31A	APP CRS 320°	Rwy Idg 4999 TDZE 16 Apt Elev 18
--	------------------------	---

RNAV (GPS) RWY 31

VENICE MUNI (VNC)

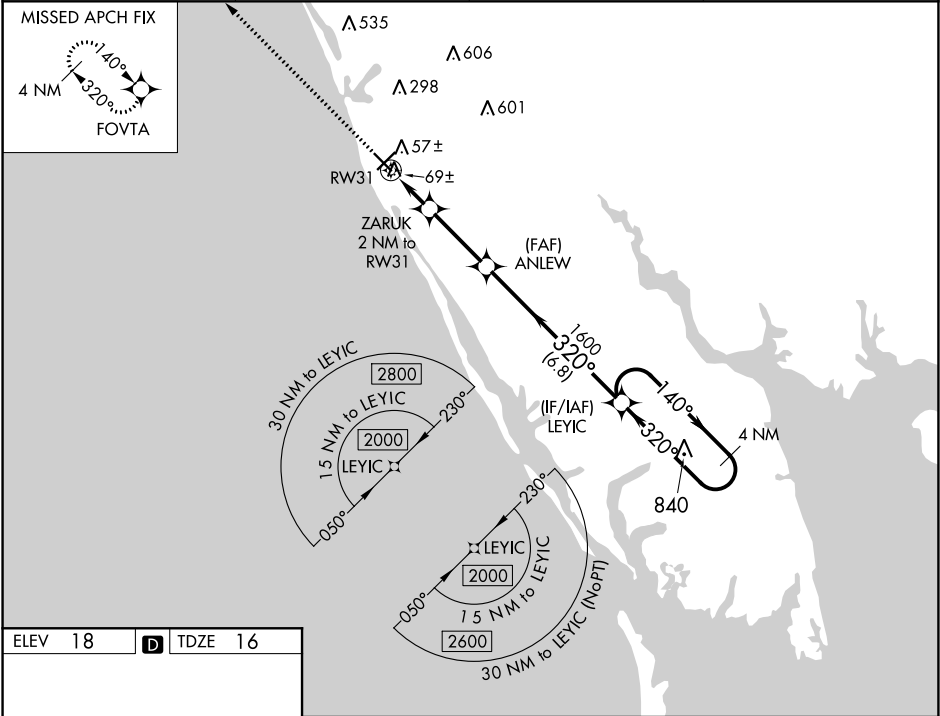
▼

▲

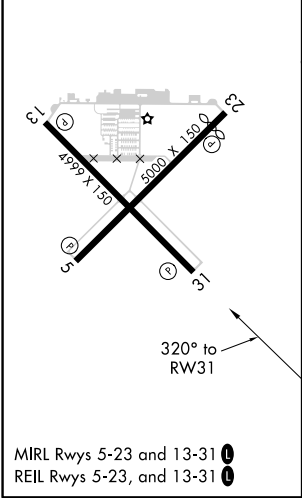
Inop table does not apply. DME/DME RNP-0.3 NA. Helicopter visibility reduction below ¾ SM NA. When local altimeter setting not received, use Sarasota altimeter setting and increase all MDA 60 feet LP/LNAV Cat C and D visibility ¼ mile and Circling Cat C visibility ¼ mile.

MISSED APPROACH:
Climb to 2000 direct FOVTA and hold.

AWOS-3 119.275	TAMPA APP CON 119.65 353.575	CLNC DEL 118.075	UNICOM 122.725 (CTAF) 0
--------------------------	--	----------------------------	-----------------------------------



ELEV 18	D	TDZE 16
---------	----------	---------



2000 ↑	FOVTA 				
CATEGORY		A	B	C	D
LP MDA	360-1 344 (400-1)				
LNAV MDA	360-1 344 (400-1)				
CIRCLING	500-1 482 (500-1)	700-2 682 (700-2)	920-3 902 (1000-3)		