

WAAS CH <b>86502</b> <b>W11A</b>	APP CRS <b>107°</b>	Rwy Idg TDZE <b>145</b> Apt Elev <b>145</b>	<b>4001</b>
--	------------------------	---	-------------

**RNAV (GPS) RWY 11**  
WINTER HAVEN RGNL (GIF')

RNP APCH

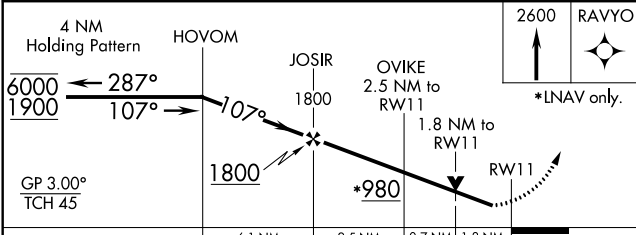
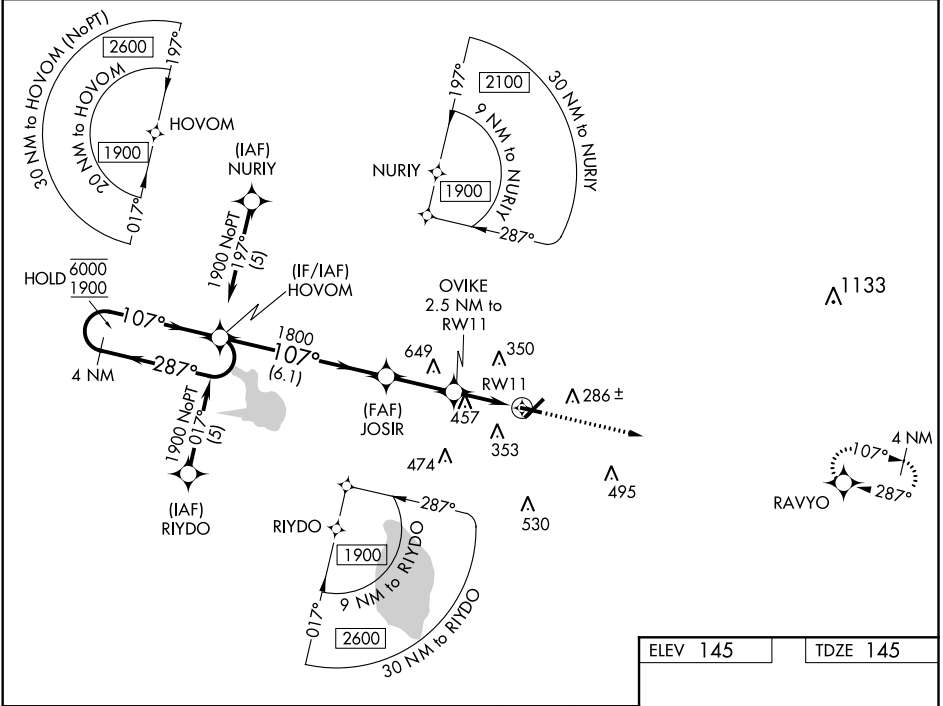
▼

▲

For uncompensated Baro-VNAV systems, LNAV/VNAV NA below -15°C or above 54°C. Straight-In minimums NA at night. When local altimeter setting not received, use Barlow altimeter setting and increase all DA/MDAs 20 feet. Baro-VNAV NA when using Barow altimeter setting.

MISSED APPROACH:  
Climb to 2600 direct RAVYO and hold.

ASOS <b>133.675</b>	TAMPA APP CON <b>120.65 290.3</b>	CLNC DEL (GCO) <b>121.725</b>	UNICOM <b>123.05 (CTAF) 0</b>
------------------------	--------------------------------------	----------------------------------	----------------------------------



CATEGORY	A	B	C	D
LPV DA	395-1 250 (300-1)			
LNAV/VNAV DA	647-1¾ 502 (600-1¾)			
LNAV MDA	760-1 615 (700-1)	760-1¾ 615 (700-1¾)	760-2 615 (700-2)	
CIRCLING	760-1¾ 615 (700-1¾)		820-2¼ 675 (700-2¼)	

ELEV 145 TDZE 145

2600 RAVYO

\*LNAV only.

107° to RW11

4001 X 60 500 X 100

REIL Rwy 5 and 23  
REIL Rwy 11 and 29  
MIRL Rwy 5-23 and 11-29