

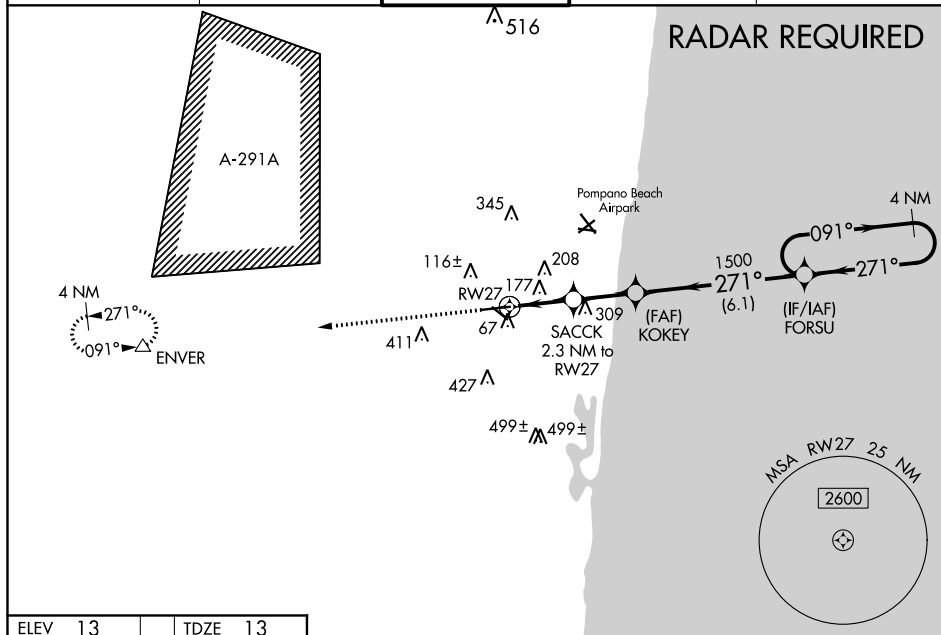
WAAS CH 50319 W27A	APP CRS 271°	Rwy Idg 6002 TDZE 13 Apt Elev 13
----------------------------------------	------------------------	-------------------------------------------------------------

RNAV (GPS) RWY 27
FORT LAUDERDALE EXECUTIVE (FXE)

A For uncompensated Baro-VNAV systems, LNAV/VNAV NA below 4°C (40°F) or above 54°C (130°F). DME/DME RNP-0.3 NA. When local altimeter setting not received, use Fort Lauderdale/Hollywood Intl altimeter setting and increase LPV DA to 414; LNAV/VNAV DA to 468. Increase all MDA 20 feet and increase LPV all Cats and LNAV Cats C/D visibility to 1 1/8. Baro-VNAV and VDP NA when using Fort Lauderdale/Hollywood Intl altimeter setting. Helicopter visibility reduction below 3/4 SM NA.

MISSED APPROACH:
Climb to 2000 direct
ENVER and hold.

ATIS 119.85	MIAMI APP CON 119.7 306.3	EXECUTIVE TOWER 120.9 239.3	GND CON 121.75	CLNC DEL 127.95
----------------	------------------------------	--------------------------------	-------------------	--------------------



ELEV	13		TDZE	13
------	----	--	------	----

