

VORTAC LAL	APP CRS	Rwy Idg	3950
116.0	275°	TDZE	154
Chan 107		Apt Elev	154

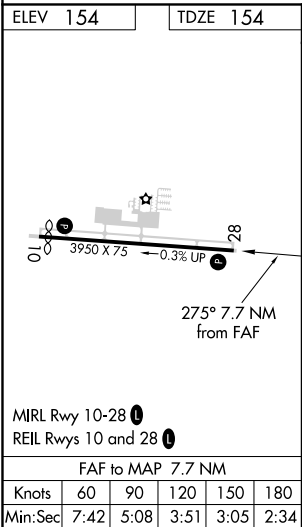
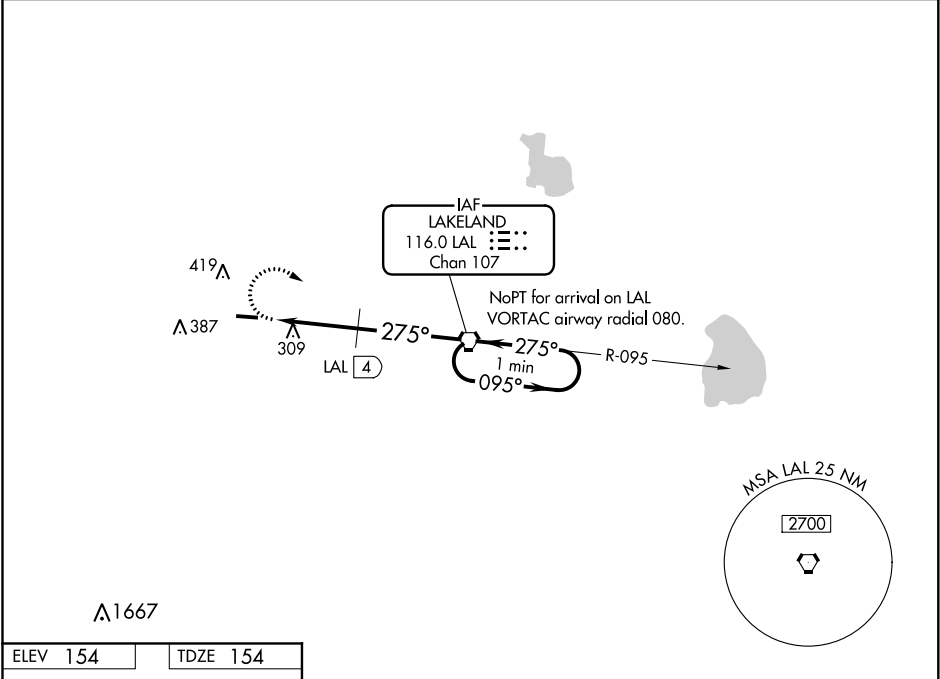
VOR RWY 28  
PLANT CITY (PCM)

**NA**

When local altimeter setting not received, use Lakeland altimeter setting and increase all MDA 20 feet. Straight-in and Circling Rwy 28 NA at night. Rwy 28 helicopter visibility reduction below 1 SM NA.

MISSED APPROACH: Climbing right turn to 2000 direct LAL VORTAC and hold.

AWOS-3 120.025	TAMPA APP CON 120.65 290.3	CLNC DEL 121.725 (GCO)	UNICOM 123.05 (CTAF) <b>0</b>
-------------------	-------------------------------	---------------------------	----------------------------------



2000

LAL

LAL VORTAC

LAL

4

800

095° →

← 275°

2000

3.7 NM

4 NM

CATEGORY	A	B	C	D
S-28	800-1	646 (700-1)	NA	
<b>C</b> CIRCLING	800-1	646 (700-1)	NA	
DME MINIMUMS				
S-28	600-1	446 (500-1)	NA	
<b>C</b> CIRCLING	700-1	800-1	NA	
	546 (600-1)	646 (700-1)		