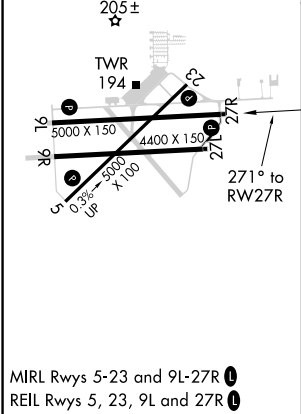
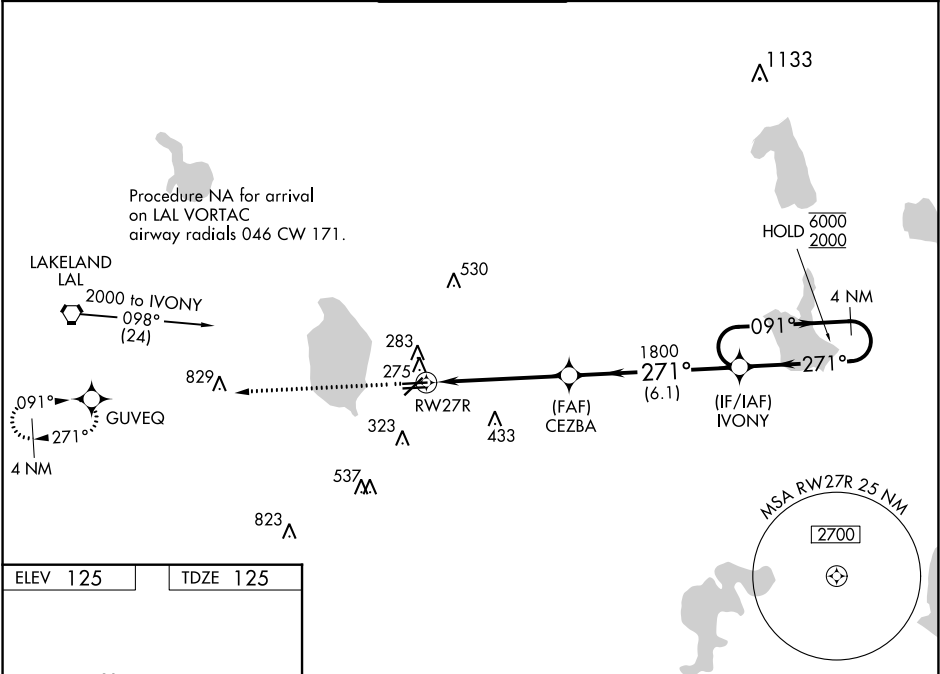


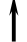

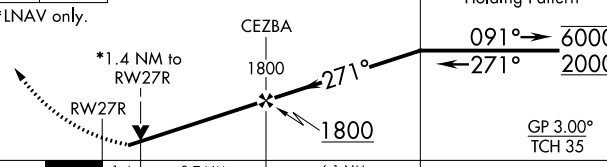
WAAS CH <b>82412</b> <b>W27A</b>	APP CRS <b>271°</b>	Rwy Idg TDZE Apt Elev	<b>5000</b> <b>125</b> <b>125</b>
--	------------------------	-----------------------------	---

RNAV (GPS) RWY 27R  
BARTOW EXECUTIVE (BOW)

RNP APCH.	
<p><b>⚠</b> Rwy 27R helicopter visibility reduction below ¾ SM NA. When local altimeter setting not received, use Tampa Intl altimeter setting and increase LPV DA to 576 feet, LNAV/VNAV DA to 636 feet and all MDA 120 feet, increase LPV visibility all Cats ¼ SM, increase LNAV visibility Cat C ¼ SM, Cat D ⅝ SM. For uncompensated Baro-VNAV systems, LNAV/VNAV NA below -15°C or above 54°C. VDP and Baro-VNAV NA when using Tampa Intl altimeter setting.</p>	<p>MISSED APPROACH: Climb to 2000 direct GUYEQ and hold.</p>

AWOS-3 <b>123.775</b>	TAMPA APP CON <b>120.65 290.3</b>	<b>BARTOW TOWER ★</b> <b>121.20</b> (CTAF)	GND CON <b>121.9</b>	UNICOM <b>122.95</b>
--------------------------	--------------------------------------	---	-------------------------	-------------------------



2000	GUYEQ			
				
*LNAV only.				
				
CATEGORY	A	B	C	D
LPV DA	470-1¼ 345 (400-1¼)			
LNAV/VNAV DA	530-1½ 405 (500-1½)			
LNAV MDA	580-1 455 (500-1)		580-1⅜ 455 (500-1⅜)	580-1½ 455 (500-1½)