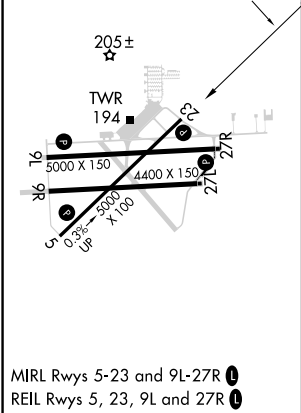
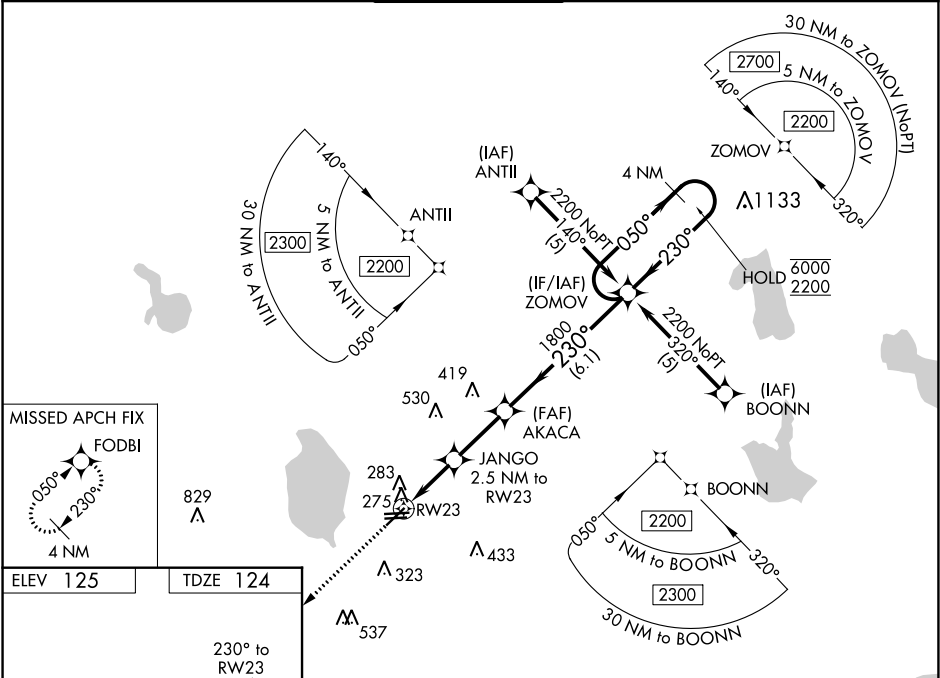


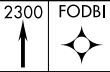
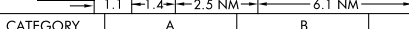
WAAS CH <b>63112</b> <b>W23A</b>	APP CRS <b>230°</b>	Rwy Idg TDZE <b>124</b> Apt Elev <b>125</b>
--	------------------------	---

RNAV (GPS) RWY 23  
BARTOW EXECUTIVE (BOW)

RNP APCH. <div><div>▼</div><div>⚠</div></div> Rwy 23 helicopter visibility reduction below ¼ SM NA. When local altimeter setting not received, use Tampa Intl altimeter setting and increase LPV DA to 560 feet, LNAV/VNAV DA to 681 feet and all MDA 120 feet, increase LPV all Cats visibility ¼ SM, LNAV/VNAV all Cats ½ SM, LNAV Cat C ¼ SM, Cat D ½ SM. For uncompensated Baro-VNAV systems, LNAV/VNAV NA below -15°C or above 54°C. VDP and Baro-VNAV NA when using Tampa Intl altimeter setting.		MISSED APPROACH: Climb to 2300 direct FODBI and hold.
--	--	---

AWOS-3 <b>123.775</b>	TAMPA APP CON <b>120.65 290.3</b>	<b>BARTOW TOWER ★</b> <b>121.20</b> (CTAF)	GND CON <b>121.9</b>	UNICOM <b>122.95</b>
--------------------------	--------------------------------------	---	-------------------------	-------------------------



2300 FODBI		VGSI and RNAV glidepath not coincident (VGSI Angle 3.50/TCH 46).			
					
*LNAV only.		AKACA 1800			
JANGO 2.5 NM to RW23		ZOMOV 4 NM Holding Pattern			
*1.1 NM to RW23		050°→ 6000 ← 230° 2200			
RW23		GP 3.00° TCH 60			
					
CATEGORY	A	B	C	D	
LPV DA	454-1 330 (400-1)				
LNAV/VNAV DA	575-1½ 451 (500-1½)				
LNAV MDA	580-1 456 (500-1)	580-1½ 456 (500-1½)	580-1½ 456 (500-1½)	580-1½ 456 (500-1½)	