

WAAS CH 86536 W09A	APP CRS 094°	Rwy Idg TDZE 32 Apt Elev 34	5000
--	------------------------	---	-------------

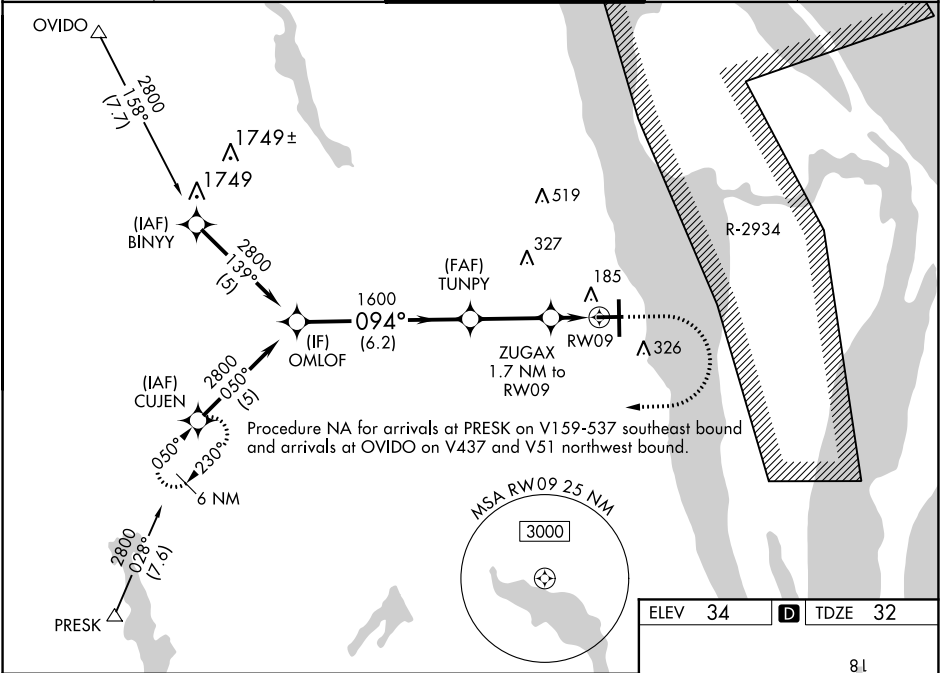
RNAV (GPS) RWY 9

SPACE COAST RGNL (TIX)

⚠ DME/DME RNP-0.3 NA. For uncompensated Baro-VNAV systems, LNAV/VNAV NA below -15°C (5°F) or above 46°C (115°F). When local altimeter setting not received, use Melbourne altimeter setting and increase all LPV DA to 352 feet, increase all LNAV/VNAV DA to 407 feet and all visibilities ¼ SM; increase all LNAV MDAs 60 feet and Cat C and D visibility ¼ SM. Rwy 9 helicopter visibility reduction below ¼ SM NA. VDP and Baro-VNAV NA when using Melbourne altimeter setting.

MISSED APPROACH: Climb to 800 then climbing right turn to 2800 direct CUJEN and hold.

ATIS 120.625	ORLANDO APP CON 134.95 281.425	SPACE COAST TOWER ★ 118.9 (CTAF) 0	GND CON 121.85	UNICOM 122.95
------------------------	--	--	--------------------------	-------------------------



VGSI and RNAV glidepath not coincident (VGSI Angle 3.00/TCH 42).

800

2800

CUJEN

OMLOF

2800

094°

1600

TUNPY

ZUGAX 1.7 NM to RW09

* 1.1 NM to RW09

* 640

RW09

* LNAV only

GP 3.10° TCH 60

6.2 NM

2.9 NM

0.6 NM

1.1 NM

CATEGORY	A	B	C	D
LPV DA		292-1	260 (300-1)	
LNAV/VNAV DA		347-1	315 (400-1)	
LNAV MDA	420-1	388 (400-1)	420-1 ⅓	388 (400-1 ⅓)
CIRCLING	640-1	606 (700-1)	640-1 ¾	640-2

5000 X 100

094° to RW09

8.1

7319 X 150

TWR 98

97

36

MIRL Rwy 9-27 0

HIRL Rwy 18-36 0

REIL Rws 9, 18, 27 and 36 0