

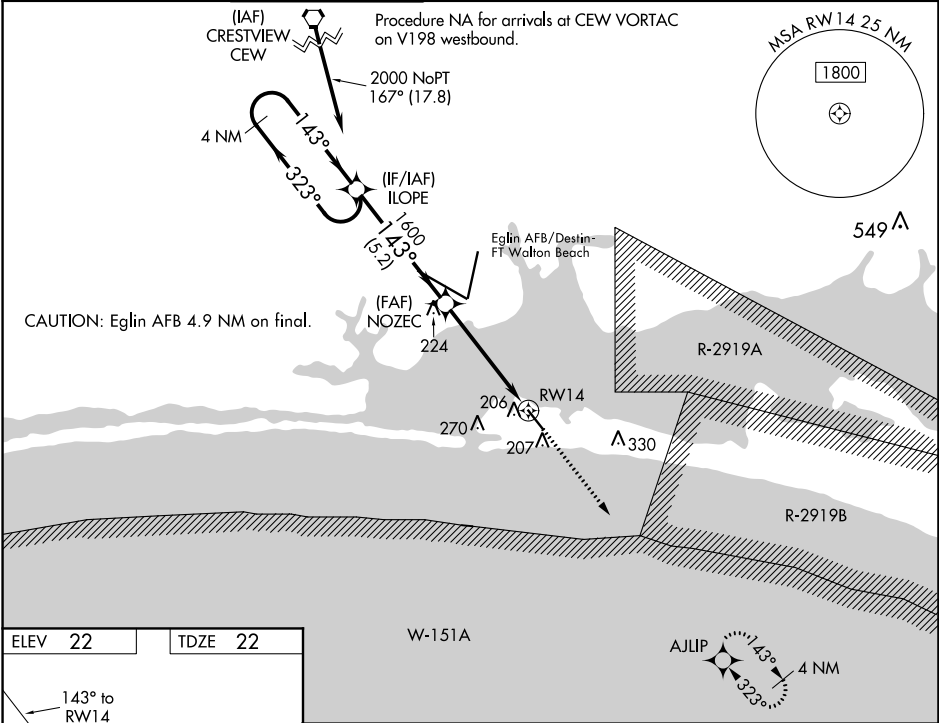
WAAS CH 48923 W14A	APP CRS 143°	Rwy Idg 5001 TDZE 22 Apt Elev 22
--	------------------------	---

RNAV (GPS) RWY 14
DESTIN EXECUTIVE (DTS)

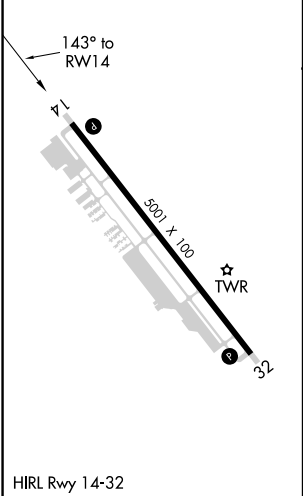
For uncompensated Baro-VNAV systems, LNAV/VNAV NA below 0°C (32°F) or above 54°C (130°F).
Baro-VNAV and VDP NA when using Crestview altimeter setting. Rwy 14 helicopter visibility reduction below ¾ SM NA. DME/DME RNP-0.3 NA. When local altimeter setting not received, use Crestview altimeter setting and increase all DA/MDA 80 feet; increase LPV all Cats visibility ½ SM, LNAV/VNAV all Cats visibility ¾ SM, increase LNAV Cats C and D ½ SM, and Circling Cats C and D ¾ SM.

MISSED APPROACH:
Climb to 2000 direct
AJUP and hold.

ATIS 133.925	EGLIN APP CON 132.1 360.6	DESTIN TOWER ★ 118.45 (CTAF) 0	GND CON 121.6	CLNC DEL 121.6	CLNC DEL 127.7 377.2 (When twr closed)	UNICOM 123.075
------------------------	-------------------------------------	---	-------------------------	--------------------------	---	--------------------------



ELEV 22	TDZE 22
----------------	----------------



<div>4 NM Holding Pattern</div> <div>ILOPE</div> <div>2000 ← 323° 143° →</div> <div>GP 3.00° TCH 43</div>					<div>NOZEC</div> <div>1600</div> <div>143°</div> <div>1600</div> <div>*1.2 NM to RW14</div> <div>RW14</div> <div>*LNAV only.</div> <div>2000 ↑</div> <div>AJLIP</div>					
5.2 NM					3.6 NM		1.2 NM			
CATEGORY		A		B		C		D		
LPV DA		272-1				250 (300-1)				
LNAV/VNAV DA		367-1½				345 (400-1½)				
LNAV MDA		460-1		438 (500-1)		460-1¼		438 (500-1¼)		
CIRCLING		580-1		558 (600-1)		680-1¾ 658 (700-1¾)		680-2 658 (700-2)		