

WAAS CH <b>93505</b> <b>W24A</b>	APP CRS <b>242°</b>	Rwy Idg TDZE Apt Elev	<b>5054</b> <b>20</b> <b>20</b>
--	------------------------	-----------------------------	---------------------------------------

RNAV (GPS) RWY 24

APALACHICOLA RGNL-CLEVE RANDOLPH FIELD (AAF)

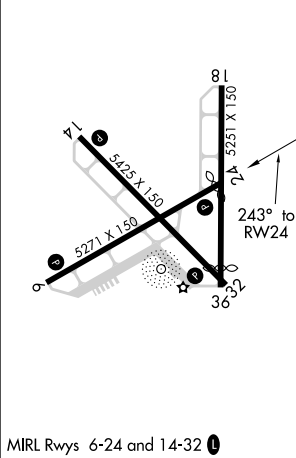
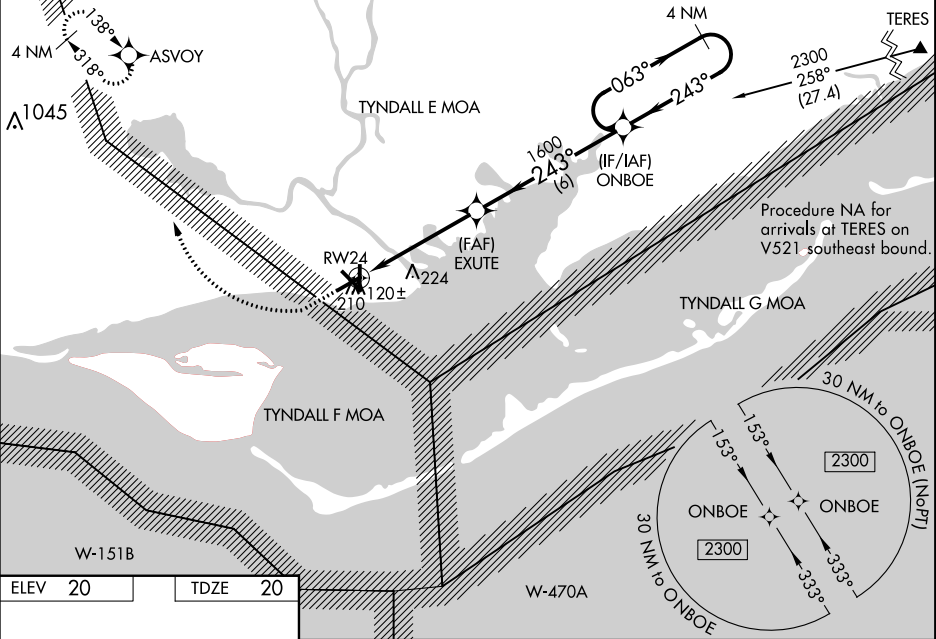
▼




▲

Baro-VNAV and VDP NA when using Northwest Florida Beaches Intl altimeter setting.  
For uncompensated Baro-VNAV systems, LNAV/VNAV NA below -15°C (-5°F) or above 54°C (130°F). DME/DME RNP-0.3 NA. Helicopter visibility reduction below ¾ SM NA. When local altimeter setting not received; use Northwest Florida Beaches Intl altimeter setting and increase all DA 134 feet and all MDA 140 feet; increase LPV and LNAV/VNAV all Cats visibility ½ mile, increase LNAV Cat C/D visibility ¾ mile, increase Circling Cat C/D visibility ¼ mile. Night Landing: Rwy 6, 14, 18, 36 NA.

MISSED APPROACH: Climb to 600 then climbing right turn to 3000 direct ASVOY and hold, continue climb-in-hold to 3000.

ASOS <b>119.925</b>	TYNDALL APP CON ★ <b>124.15</b>	UNICOM <b>122.8 (CTAF)</b>
------------------------	------------------------------------	-------------------------------



600	3000	ASVOY				
						
*LNAV only.			EXUTE	ONBOE	4 NM Holding Pattern	