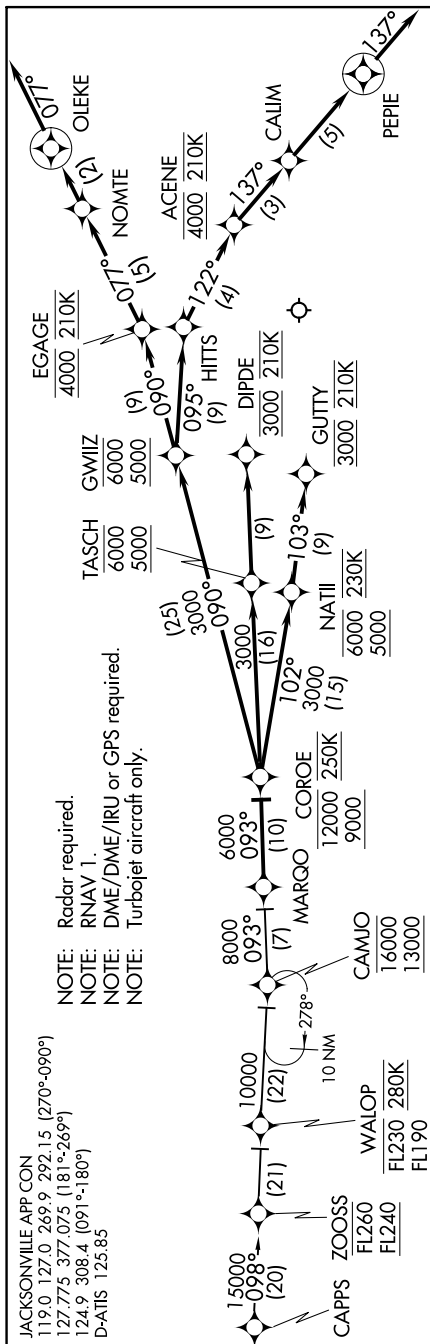


MARQO TWO ARRIVAL (RNAV)

NOTE: Chart not to scale.



ARRIVAL ROUTE DESCRIPTION

CAPPS TRANSITION (CAPPS.MARQO2):

From MARQO on track 093° to cross COROE between 9000 and 12000 and at 250K.

LANDING RWY 8: From COROE on track 102° to cross NATII between 5000 and 6000 and at 230K, then on track 103° to cross GUTTY at 3000 and at 210K. Expect RNAV (RNP) RWY 8 approach; non-RNP aircraft: expect RADAR vectors to final approach course.

LANDING RWY 14: From CORDE on track 093° to cross TASCH between 5000 and 6000, then on track 093° to cross DIPE at 3000 and at 210K. Expect RNAV (RNP) RWY 14 approach; non-RNP aircraft: expect RADAR vectors to final approach course.

LANDING RWY 26: From COROE on track 090° to cross GWIIZ between 5000 and 6000, then on track 090° to cross EGAGE at 4000 and at 210K, then on track 077° to NOMTE, then on track 077° to OLEKE, then on 077° track. Expect RADAR vectors to find approach course.

LANDING RWY 32: From COROE on track 090° to cross GWILZ between 5000 and 6000, then on track 095° to HITS, then on track 122° to cross ACENE at 4000 and at 210K, then on track 137° to CAUM, then on track 137° to PEPIE, then on 137° track. Expect RADAR vectors to final approach course.