

## HI-TACAN RWY 14

VORTAC CRG <b>114.5</b> Chan <b>92</b>	APCH CRS <b>136°</b>	Rwy Idg <b>7701</b> TDZE <b>27</b> Arpt Elev <b>29</b>	JAL-5570 [USAF]	JACKSONVILLE INTL (KJAX)
--	-------------------------	--	-----------------	--------------------------

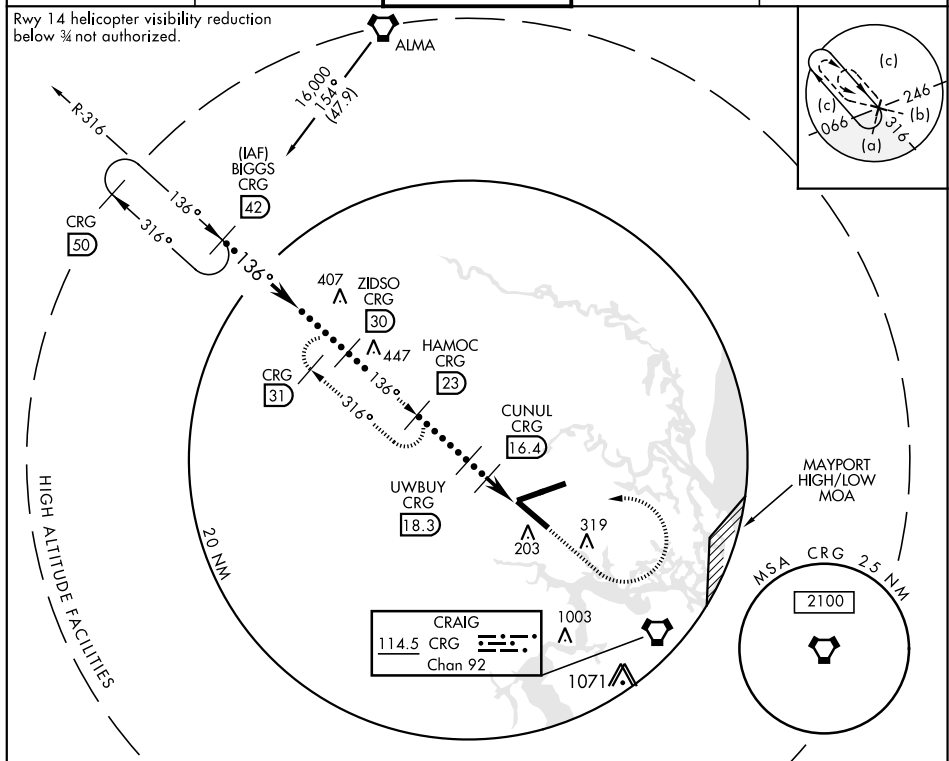
\* When ALS inop, increase vis to 1 mile.



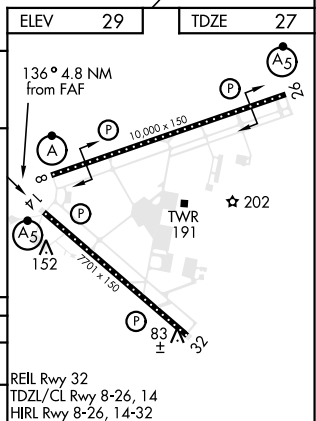
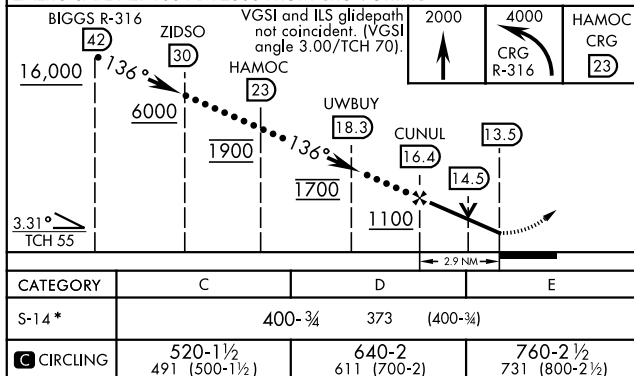
**MISSED APPROACH:** Climb to 2000 then climbing left turn to 4000 on CRG VORTAC R-316 to HAMOC 23 DME and hold.

ATIS 125.85	JACKSONVILLE APP CON 119.0 269.9	JACKSONVILLE TOWER 118.3 317.7	GND CON 121.9 348.6	CLNC DEL 119.5 290.275
----------------	-------------------------------------	-----------------------------------	------------------------	---------------------------

Rwy 14 helicopter visibility reduction  
below  $\frac{3}{4}$  not authorized.



EMERG SAFE ALT 100 NM 2800 FROM CRG VORTAC



JACKSONVILLE, FLORIDA

30°30'N-81°41'W

JACKSONVILLE INTL (KJAX)

Amdt 4A 23MAY19

## HI-TACAN RWY 14

SE-3, 31 DEC 2020 to 28 JAN 2021

SE-3. 31 DEC 2020 to 28 JAN 2021