

WAAS  
CH **40234**  
**W17A**

APP CRS  
**175°**

Rwy Idg  
TDZE **27**  
Apt Elev **28**

**RNAV (GPS) RWY 17**

ORMOND BEACH MUNI (OMN)

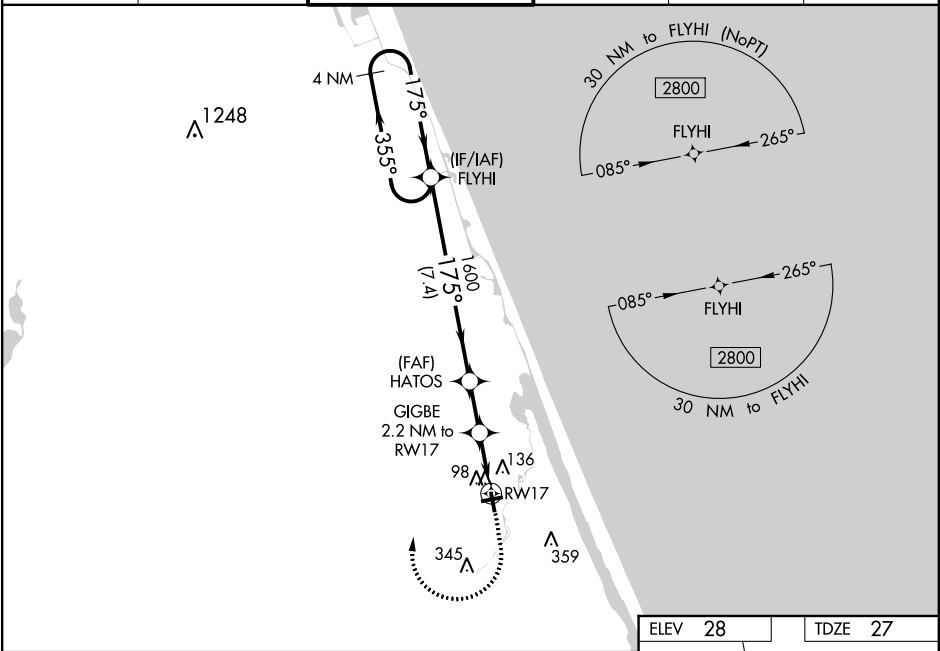
⚠

Baro-VNAV NA when using Daytona Beach altimeter setting. For uncompensated Baro-VNAV systems, LNAV/VNAV NA below -15°C (5°F) or above 54°C (130°F). DME/DME RNP-0.3 NA. Helicopter visibility reduction below ¾ SM NA. When local altimeter setting not received, use Daytona Beach altimeter setting and increase all DA 19 feet and all MDA 20 feet; increase LNAV Cat C visibility ½ mile. VDP NA when using Daytona Beach altimeter setting.

MISSED APPROACH:

Climb to 600 then climbing right turn to 2800 direct FLYHI and hold.

|                        |   |  |                           |                            |                         |
|------------------------|---|--|---------------------------|----------------------------|-------------------------|
| ATIS<br><b>118.475</b> | DAYTONA APP CON<br><b>125.8 269.075</b> | ORMOND BEACH TOWER★<br><b>119.075 (CTAF)</b> | GND CON<br><b>121.625</b> | CLNC DEL<br><b>121.625</b> | UNICOM<br><b>123.05</b> |
|------------------------|---|--|---------------------------|----------------------------|-------------------------|



|  |       |             |                      |             |
|--|-------|-------------|----------------------|-------------|
| VGSI and RNAV glidepath not coincident (VGSI Angle 3.50/TCH 51). |       | 600         | 2800                 | FLYHI       |
| 4 NM Holding Pattern   |       | FLYHI       | HATOS                | *LNAV only. |
| 2800 ← 355° 175° → 175°  |       | 1600        | GIGBE 2.2 NM to RW17 |             |
| GP 3.50° TCH 60  |       | 1600        | *1.1 NM to RW17      |             |
| 7.4 NM   |       | 1.9 NM      | 1.1 NM               | 1.1 NM      |
| CATEGORY   | A     | B           | C                    | D           |
| LPV DA   | 302-1 | 275 (300-1) |                      | NA          |
| LNAV/VNAV DA   | 288-1 | 261 (300-1) |                      | NA          |
| LNAV MDA   | 400-1 | 373 (400-1) |                      | NA          |
| CIRCLING   | 500-1 | 471 (500-1) | 740-2<br>711 (800-2) | NA          |

REIL Rwy 9, 17, 27, and 35

MIRL Rwy 9-27 and 17-35