

MIAMI, FLORIDA

AL-5349 (FAA)

19115

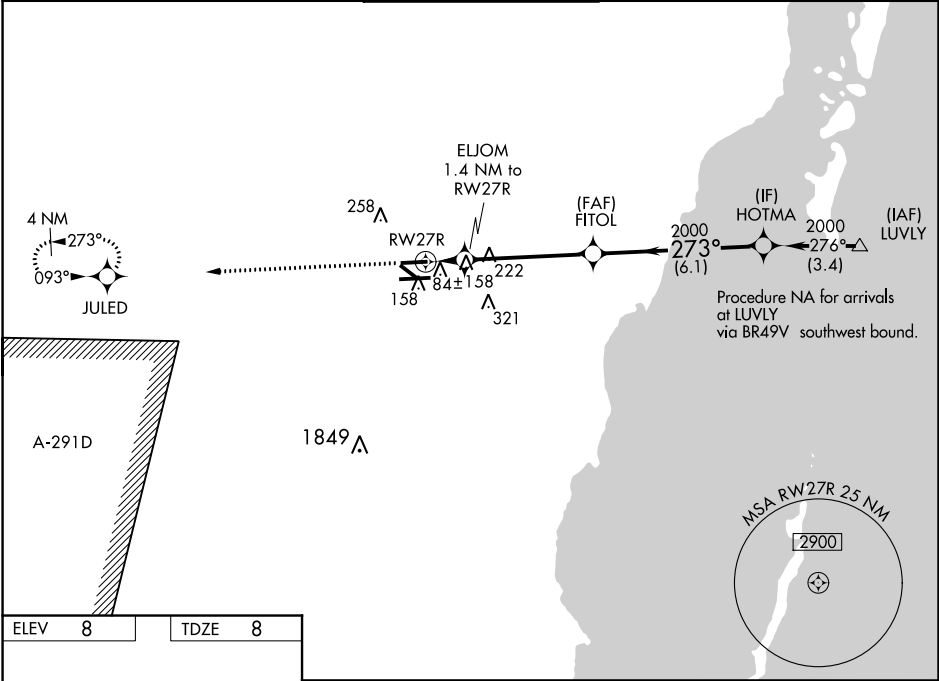
WAAS CH 93615 W27B	APP CRS 273°	Rwy Idg TDZE Apt Elev	5003 8 8
--	------------------------	-----------------------------	-------------------------------------

RNAV (GPS) RWY 27R
MIAMI EXECUTIVE (TMB)

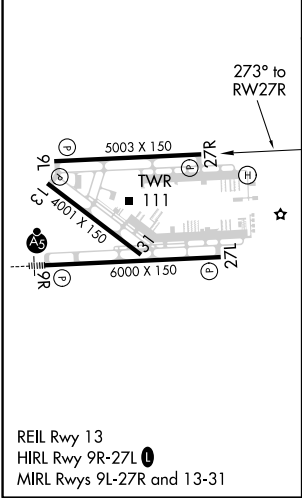
For uncompensated Baro-VNAV systems, LNAV/VNAV NA below -1.5°C (5°F) or above 49°C (120°F). DME/DME RNP-0.3 NA. When local altimeter setting not received, use Miami Intl altimeter setting and adjust all DA 27 feet and all MDA 40 feet; increase LPV all Cnts visibility ¼ mile, LNAV Cat D visibility ¼ mile, and Circling Cat D visibility ¼ mile. Baro-VNAV NA when using Miami Intl altimeter setting. Circling to Rwy 13, 31 NA at night.

MISSED APPROACH: Climb to 2000 direct JULED and hold.

ATIS 124.0	MIAMI APP CON 125.5 354.1	TAMiami TOWER ★ 118.9 (CTAF) 0	GND CON 121.7	CLNC DEL 133.0
----------------------	-------------------------------------	--	-------------------------	--------------------------



ELEV 8	TDZE 8
--------	--------



2000	JULED	FITOL	HOTMA	Procedure Turn NA
*LNAV only.				
RWY 27R				
ELJOM 1.4 NM to RWY 27R				
*500				
2000				
GP 3.00° TCH 50				
CATEGORY	A	B	C	D
LPV DA	258-¾ 250 (300-¾)			
LNAV/VNAV DA	352-1¼ 344 (400-1¼)			
LNAV MDA	420-1	412 (500-1)	420-1¼	412 (500-1¼)
CIRCLING	460-1	452 (500-1)	460-1½	640-2
			452 (500-1½)	632 (700-2)

MIAMI, FLORIDA
Orig-B 13OCT16

25°39'N-80°26'W

MIAMI EXECUTIVE (TMB)
RNAV (GPS) RWY 27R

SE-3, 31 DEC 2020 to 28 JAN 2021

SE-3, 31 DEC 2020 to 28 JAN 2021