

TACAN RWY 32

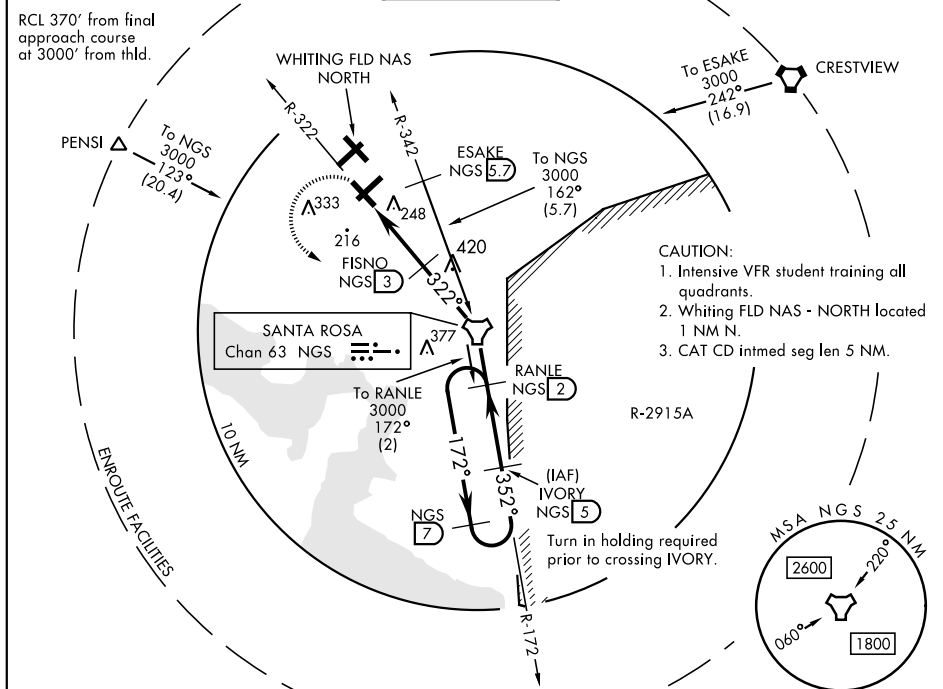
TACAN NGS Chan 63	APCH CRS 322°	Rwy ldg TDZE Arpt Elev	6002 172 177
-----------------------------	-------------------------	------------------------------	---

AL-1909 [USN]

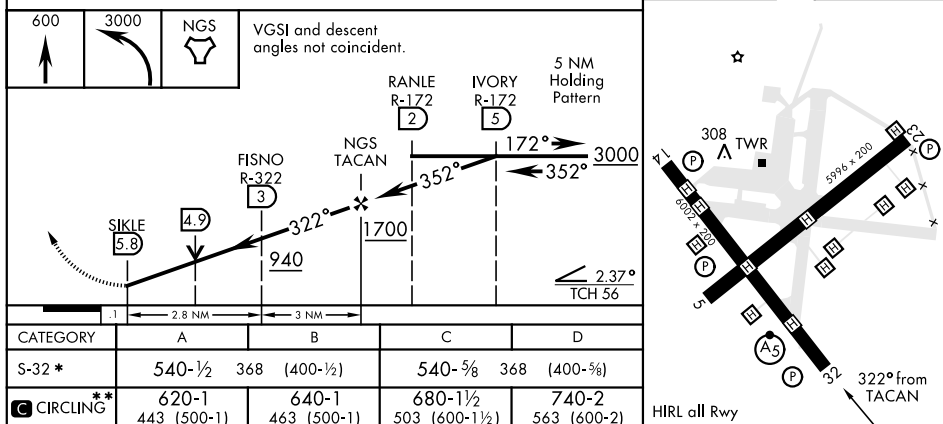
WHITING FLD NAS - SOUTH (KNDZ)

<p>▼ * When ALS inop, increase vis to 1 mile.</p> <p>** Circling not authorized NE of Rwy 14-32 and NW of Rwy 5-23.</p>	<p>MALSR</p>	<p>MISSED APPROACH: Climb to 600. Then climbing left turn to 3000 direct NGS TACAN. Then via R-172 to RANLE and hold. Contact Pensacola Approach Control.</p>
---	--------------	---

ATIS ★ 273.575	PENSACOLA APP CON 124.85 385.4	SOUTH WHITING TOWER ★ 121.4 348.675	GND CON 317.65	CLNC DEL 355.6	ASR/ PAR
--------------------------	--	---	--------------------------	--------------------------	-------------



EMERG SAFE ALT 100 NM 3500



MILTON, FLORIDA

30° 42' N-87° 01' W

WHITING FLD NAS - SOUTH (KNDZ)

Amdt 5 10SEP20

TACAN RWY 32