

MILTON, FLORIDA

ILS Y or LOC/DME RWY 32

LOC/DME I-NDZ 110.55 Chan 42(Y)	APCH CRS 319°	Rwy Idg 6002 TDZE 172 Arpt Elev 177
---	-------------------------	--

AL-1909 [USN]

WHITING FLD NAS - SOUTH (KNDZ)

TACAN Required.

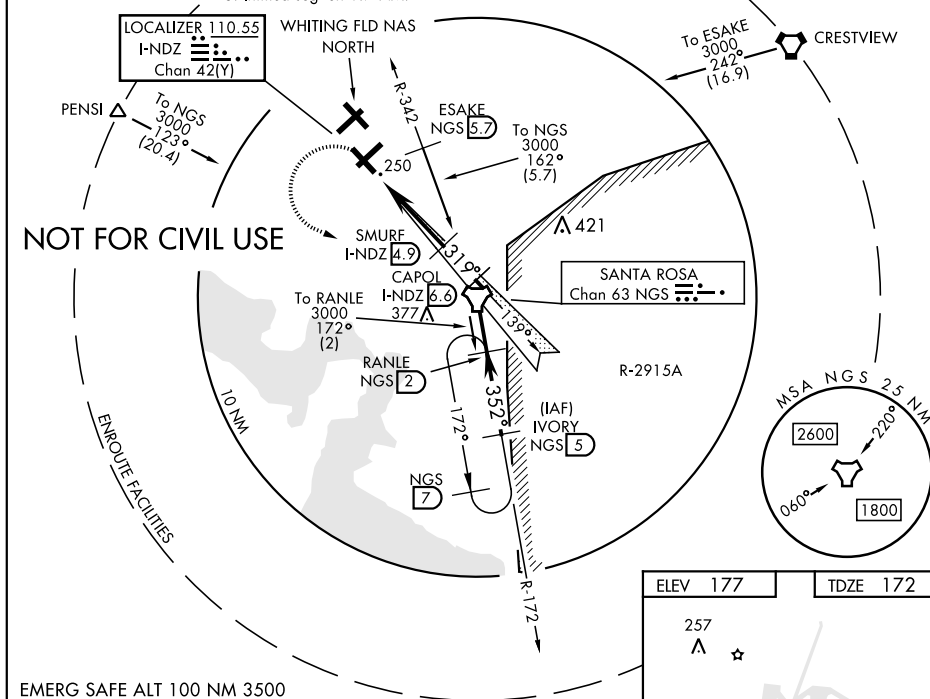
T * When ALS inop, increase vis to 3/4 mile.
 ** When ALS inop, increase vis to 1 mile.
 *** Circling not authorized NE of Rwy 14-32 and NW of Rwy 5-23.




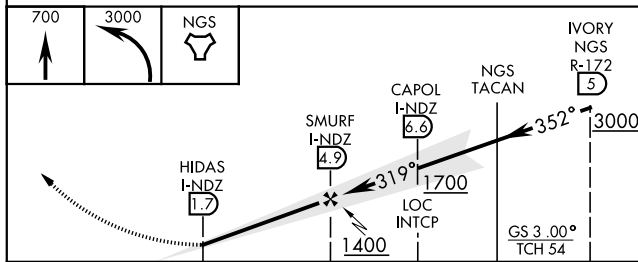
MISSED APPROACH: Climb to 700, then climbing left turn to 3000 direct NGS TACAN. Then via R-172 to RANLE and hold continue climb in hold. Contact Pensacola Approach Control.

ATIS 273.575	PENSACOLA APP CON 124.85 385.4	SOUTH WHITING TOWER 121.4 348.675	GND CON 317.65	CLNC DEL 317.65	ASR/ PAR
-----------------	-----------------------------------	--------------------------------------	-------------------	--------------------	-------------

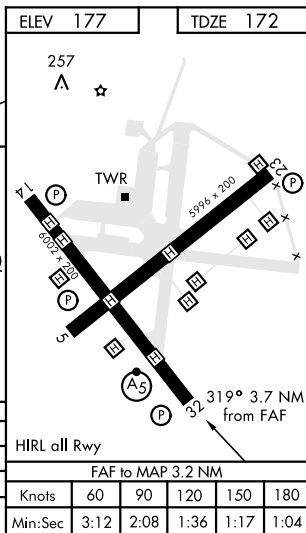
CAUTION: 1. Intensive VFR student training all quadrants.
2. Whiting FLD NAS - NORTH located 1 NM N.
3. Intmed sea len 1.7 NM.



700 ↑	3000 ↩	NGS 
----------	-----------	--



CATEGORY	A	B	C	D
S-ILS 32*	422-½	250	(300-½)	
S-LOC 32**	520-½	348 (400-½)	520-⅝	348 (400-⅝)
C CIRCLING ***	620-1 443 (500-1)	640-1 463 (500-1)	680-1½ 503 (600-1½)	740-2 563 (600-2)



MILTON, FLORIDA

30°42'N-87°01'W

WHITING FLD NAS - SOUTH (KNDZ)

Amdt 5 10SEP20

ILS Y or LOC/DME RWY 32

SE-3, 31 DEC 2020 to 28 JAN 2021

SE-3, 31 DEC 2020 to 28 JAN 2021