

WAAS CH 78305 W09A	APP CRS 094°	Rwy Idg TDZE 132 Apt Elev 142
--	------------------------	---

RNAV (GPS) RWY 9
LAKELAND LINDER INTL (LAL)

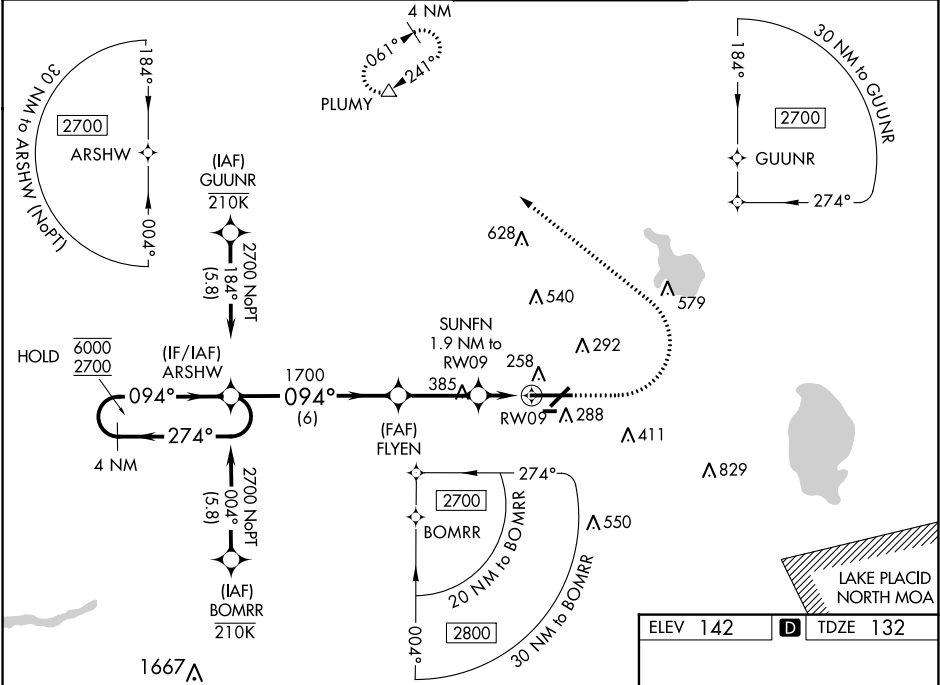
RNP APCH

▼ For uncompensated Baro-VNAV systems, LNAV/VNAV NA below -15°C or above 54°C. Baro-VNAV and VDP NA when using Plant City altimeter setting. When local altimeter setting not received, use Plant City altimeter setting and increase all DA/MDA 20 feet, increase LNAV/VNAV all Cats visibility and LNAV Cats C/D visibility ½ SM. For inop ALS, increase LNAV Cats C/D visibility to 1 ½ SM. For inop ALS when using Plant City altimeter setting, increase LNAV/VNAV all Cats visibility to 1 SM. Circling NA to Rwy's 8 and 26.

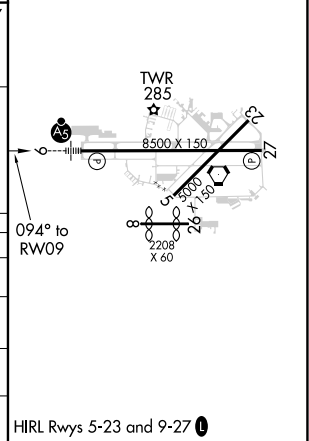
MALSR

MISSED APPROACH:
Climb to 1100 then climbing left turn to 2000 direct PLUMY and hold.

ATIS 118.025	TAMPA APP CON 120.65 290.3	LAKELAND TOWER 124.5 (CTAF) 0 236.775	GND CON 121.4
------------------------	--------------------------------------	---	-------------------------



4 NM Holding Pattern		ARSHW	*LNAV only.	1100	2000	PLUMY
6000 2700		← 274° 094° →	FLYEN 1700	↑	↘	△
GP 3.00° TCH 52		094°	SUNFN 1.9 NM to RWY 9	*1.1 NM to RWY 9	RWY 9	
		1700	*780	0.8	1.1	
		6 NM	2.9 NM	0.8	1.1	
CATEGORY	A	B	C	D		
LPV DA		332-½	200 (200-½)			
LNAV/VNAV DA		439-½	307 (300-½)			
LNAV MDA	520-½	388 (400-½)	520-5/8	388 (400-5/8)		
CIRCLING	600-1 458 (500-1)	660-1 518 (600-1)	660-1½ 518 (600-1½)	700-2 558 (600-2)		



SE-3, 31 DEC 2020 to 28 JAN 2021

SE-3, 31 DEC 2020 to 28 JAN 2021