

WAAS CH 82605 W27A	APP CRS 274°	Rwy Idg 8499 TDZE 142 Apt Elev 142
--	------------------------	---

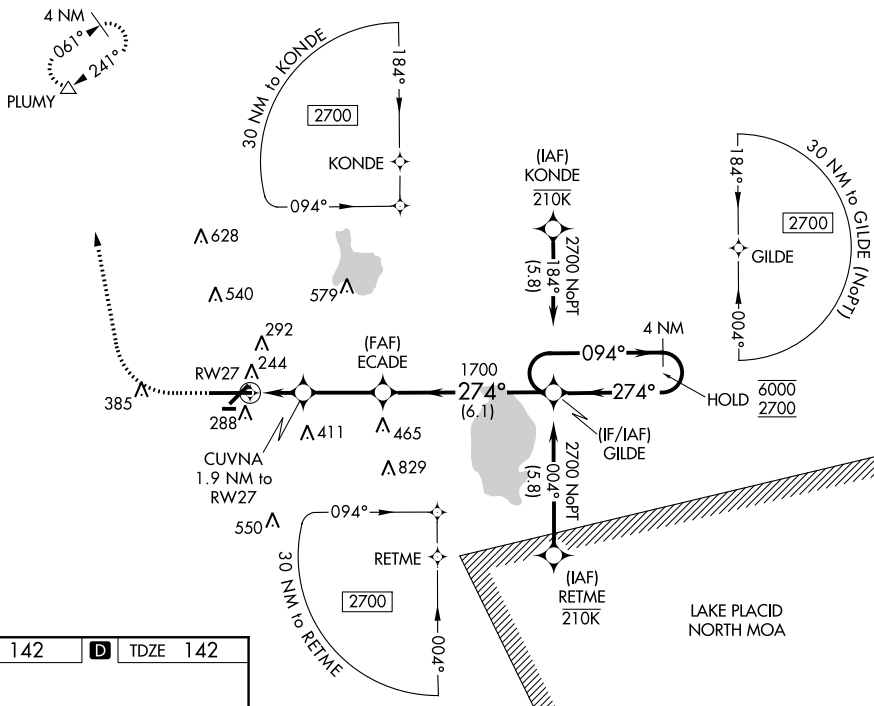
RNAV (GPS) RWY 27
LAKELAND LINDER INTL (LAL)

RNP APCH

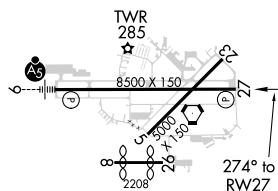
▼ For uncompensated Baro-VNAV systems, LNAV/VNAV NA below -15°C or above 54°C.
▲ When local altimeter setting not received, use Plant City altimeter setting and increase all DA/MDA 20 feet, and increase LNAV/VNAV all Cats and LNAV Cts C/D visibility 1/8 SM.
Baro-VNAV and VDP NA when using Plant City altimeter setting. Circling NA to Rwy's 8 and 26.

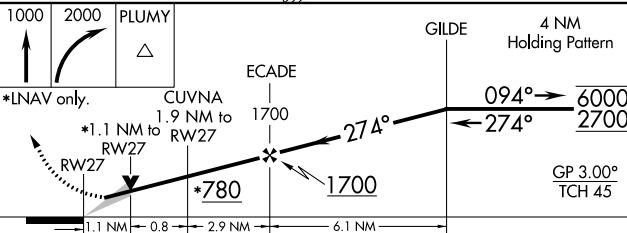
MISSED APPROACH: Climb to 1000 then climbing right turn to 2000 direct PLUMY and hold.

<p>ATIS</p> <p>118.025</p>	<p>TAMPA APP CON</p> <p>120.65 290.3</p>	<p>LAKELAND TOWER</p> <p>124.5 (CTAF) 0 236.775</p>	<p>GND CON</p> <p>121.4</p>
-----------------------------------	---	--	------------------------------------



ELEV 142	D	TDZE 142
----------	----------	----------

HIRL Rwy 5-23 and 9-27 **L**

1000 ↑	2000 ↗	PLUMY △							
*RNAV only.			CUVNA 1.9 NM to RW27 ECADE 1700 GILDE 4 NM Holding Pattern 094° → 6000 ← 274° 2700 GP 3.00° TCH 45 *780 1700 1.1 NM 0.8 2.9 NM 6.1 NM						
CATEGORY		A		B		C		D	
LPV DA		342-¾ 200 (200-¾)							
RNAV/ VNAV		455-1 313 (400-1)							
RNAV MDA		560-1 418 (500-1)				560-1⅛ 418 (500-1⅛)			
CIRCLING		600-1 458 (500-1)		660-1 518 (600-1)		660-1½ 518 (600-1½)		700-2 558 (600-2)	