

| | | |
|--|------------------------|---|
| WAAS CH 77805 W23A | APP CRS 229° | Rwy Idg TDZE 141 Apt Elev 142 |
|--|------------------------|---|

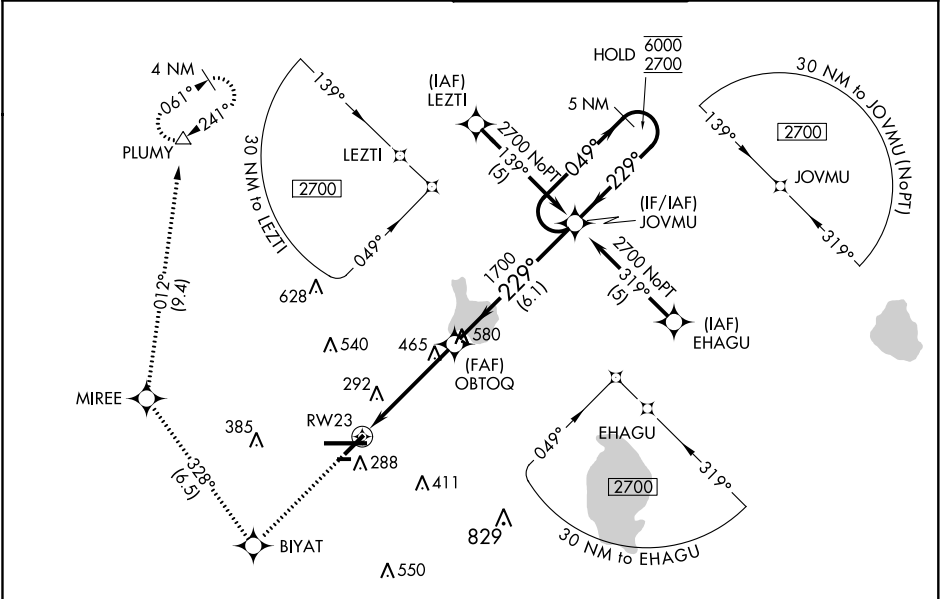
RNAV (GPS) RWY 23
LAKELAND LINDER INTL (LAL)

RNP APCH.

▼ For uncompensated Baro-VNAV systems, LNAV/VNAV NA below -15°C or above 54°C.
▲ When local altimeter setting not received, use Plant City altimeter setting and increase all DA/MDA 20 feet and increase LNAV Cat C/D and Circling Cat C visibility ½ SM.
Baro-VNAV and VDP NA when using Plant City altimeter setting. Rwy 23 helicopter visibility reduction below ¾ SM NA. Circling NA to Rwy's 8 and 26.

MISSED APPROACH: Climb to 2000 direct BIYAT and right turn on track 328° to MIREE then on track 012° to PLUMY and hold.

| | | | |
|------------------------|--------------------------------------|---|-------------------------|
| ATIS 118.025 | TAMPA APP CON 120.65 290.3 | LAKELAND TOWER 124.5 (CTAF) 236.775 | GND CON 121.4 |
|------------------------|--------------------------------------|---|-------------------------|



| | | |
|-----------------|----------|-----------------|
| ELEV 142 | D | TDZE 141 |
|-----------------|----------|-----------------|

TWR 285
8500 X 150
5000 X 50
2208 X 60

| | | | | | | |
|-----------------|---------------------|---------------------|---------------------|-------------------|-------|----------------------|
| 2000 | BIYAT | MIREE | tr 012° | PLUMY | JOVMU | 5 NM Holding Pattern |
| *RNAV only. | | | | | | |
| RWY 23 | | | | | | |
| 1.7 NM | | | | | | |
| 3 NM | | | | | | |
| 6.1 NM | | | | | | |
| GP 3.00° TCH 50 | | | | | | |
| CATEGORY | A | B | C | D | | |
| LPV DA | 426-1 285 (300-1) | | | | | |
| LNAV/VNAV DA | 480-1¼ 339 (400-1¼) | | | | | |
| LNAV MDA | 720-1 579 (600-1) | 720-1½ 579 (600-1½) | 720-1¾ 579 (600-1¾) | 720-2 578 (600-2) | | |
| CIRCLING | 720-1 578 (600-1) | 720-1½ 578 (600-1½) | 720-2 578 (600-2) | | | |

SE-3, 31 DEC 2020 to 28 JAN 2021

SE-3, 31 DEC 2020 to 28 JAN 2021