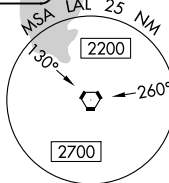


ILS or LOC RWY 9
LAKELAND LINDER INTL (LAL)

MISSED APPROACH: Climb to 1000 then climbing left turn to 2000 on heading 290° and on LAL VORTAC R-330 to PLUMY INT/PIE 33.4 DME and hold.

ALTERNATE MISSED APCH FIX

ELEV 142

TDZE 132

094° 4.8 NM
from FAF

TWR
285

8500 X 150

2208
X 60

5-23

9-27

HIRL Rwy 5-23 and 9-27