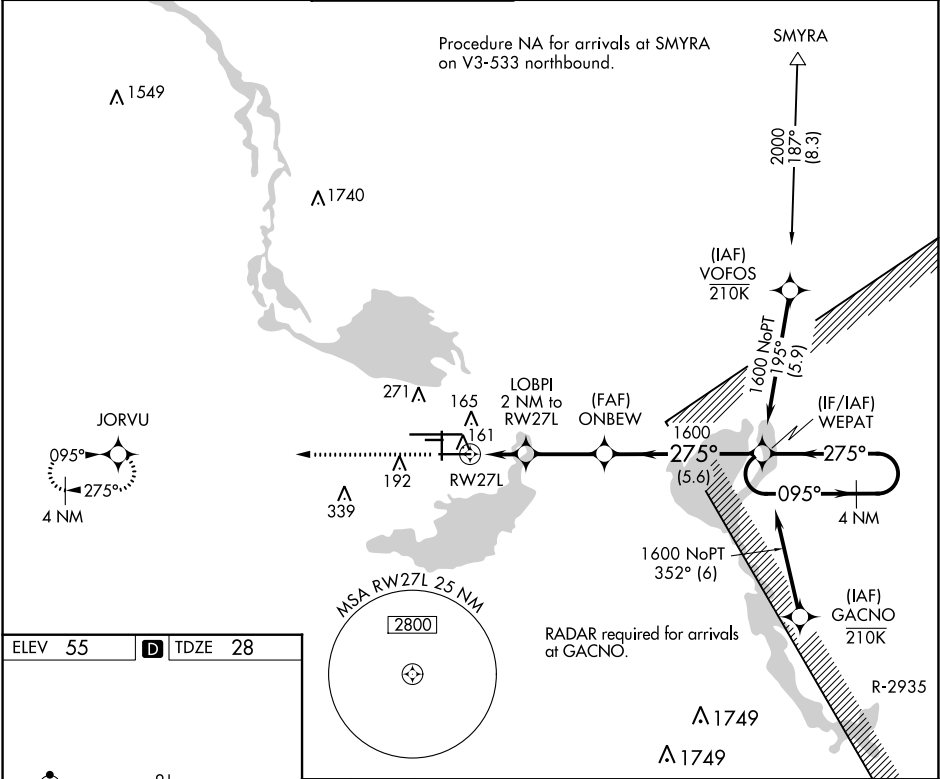


APP CRS 275°	Rwy Idg 5839 TDZE 28 Apt Elev 55	RNAV (GPS) RWY 27L		ORLANDO SANFORD INTL (SFB)	
-----------------	--	--------------------	--	----------------------------	--

N Night Landing: Rwy 27C NA. DME/DME RNP-0.3 NA. Visibility reduction by helicopters NA. When local altimeter setting not received, use Executive altimeter setting: increase all MDAs 60 feet and visibility Cat C ¼ SM. VDP NA when using Executive altimeter setting.

MISSED APPROACH: Climb to 2000 direct JORVU and hold.

ATIS 125.975	ORLANDO APP CON 135.3 351.9 (NORTH) 119.775 351.9 (SOUTH)	SANFORD TOWER★ 120.3(CTAF) 0 254.35	GND CON 121.35 254.35	CLNC DEL 123.975	CLNC DEL 121.35 (when twr closed)
-----------------	---	--	--------------------------	---------------------	---



ELEV 55

TDZE 28

2000 JORVU

ONBEW

WEPAT

4 NM Holding Pattern

1.1 0.9 2.8 NM 5.6 NM

1.1 NM to RWY 27L

3.00° TCH 45

700

CATEGORY	A	B	C	D
LNAV MDA	420-1	392 (400-1)	420-1½ 392 (400-1½)	420-2 392 (400-2)
CIRCLING	580-1	525 (600-1)	600-1½ 545 (600-1½)	640-2 585 (600-2)