

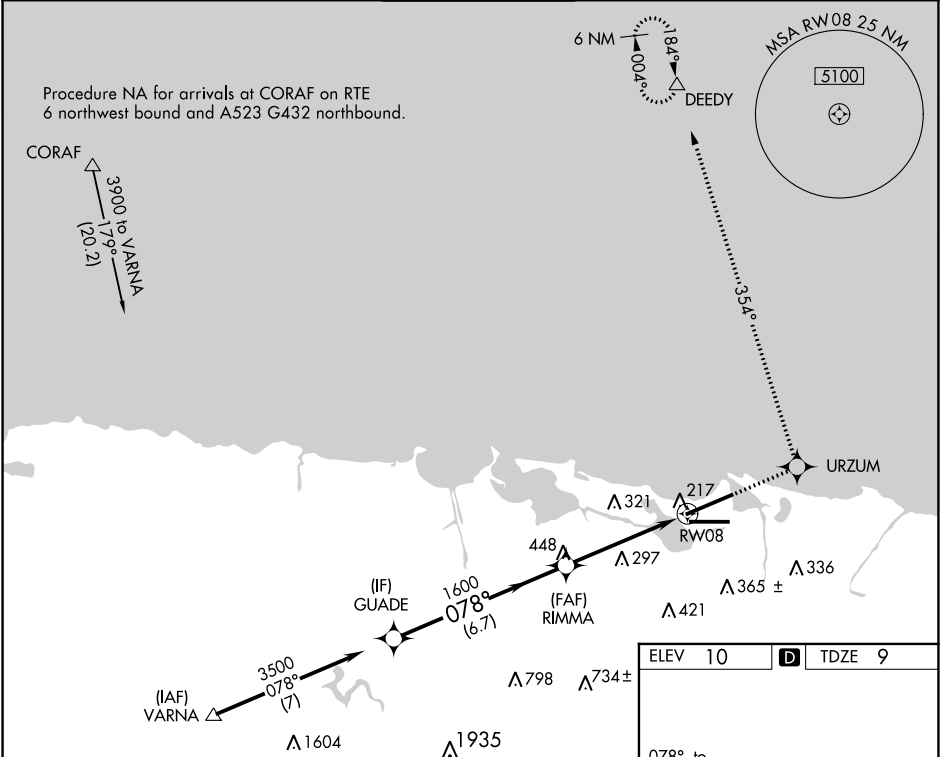
APP CRS	Rwy Idg	9384
078°	TDZE	9
	Apt Elev	10

RNAV (GPS) RWY 8

LUIS MUNOZ MARIN INTL (SJU)(TJSJ)

<div><div>WAAS VNAV NA. For uncompensated Baro-VNAV systems, LNAV/VNAV NA below -1.5°C (5°F) or above 48°C (118°F). DME/DME RNP-0.3 NA.</div><div><div>MALSR</div><div><div></div></div></div></div> <tr><td>MISSED APPROACH: Climb to 3000 direct URZUM and on track 354° to DEEDY and hold.</td></tr>	MISSED APPROACH: Climb to 3000 direct URZUM and on track 354° to DEEDY and hold.
MISSED APPROACH: Climb to 3000 direct URZUM and on track 354° to DEEDY and hold.	

D-ATIS	SAN JUAN APP CON	SAN JUAN TOWER	GND CON	CLNC DEL	CPDLC
125.8	119.4 269.2 (WEST & SW) 120.9 290.2 (NORTH & EAST)	132.05 257.8	121.9 348.6	126.4 284.6	



GUADE	VGSI and RNAV glidepath not coincident (VGSI Angle 3.00/TCH 70).	3000	URZUM	tr 354°	DEEDY
3500					
Procedure Turn NA					
GP 3.00°					
TCH 46					
	6.7 NM	3.3 NM	1.5 NM		
CATEGORY	A	B	C	D	
LNAV/VNAV DA	530-1¼	521 (600-1¼)			
LNAV MDA	560-½ 551 (600-½)	560-1 551 (600-1)	560-1¼ 551 (600-1¼)		
CIRCLING	600-1 590 (600-1)	740-2 730 (800-2)	920-3 910 (1000-3)		

SE-3, 31 DEC 2020 to 28 JAN 2021

SE-3, 31 DEC 2020 to 28 JAN 2021