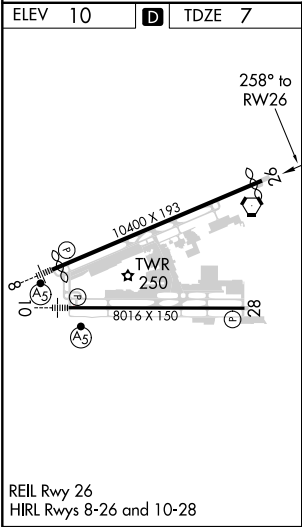
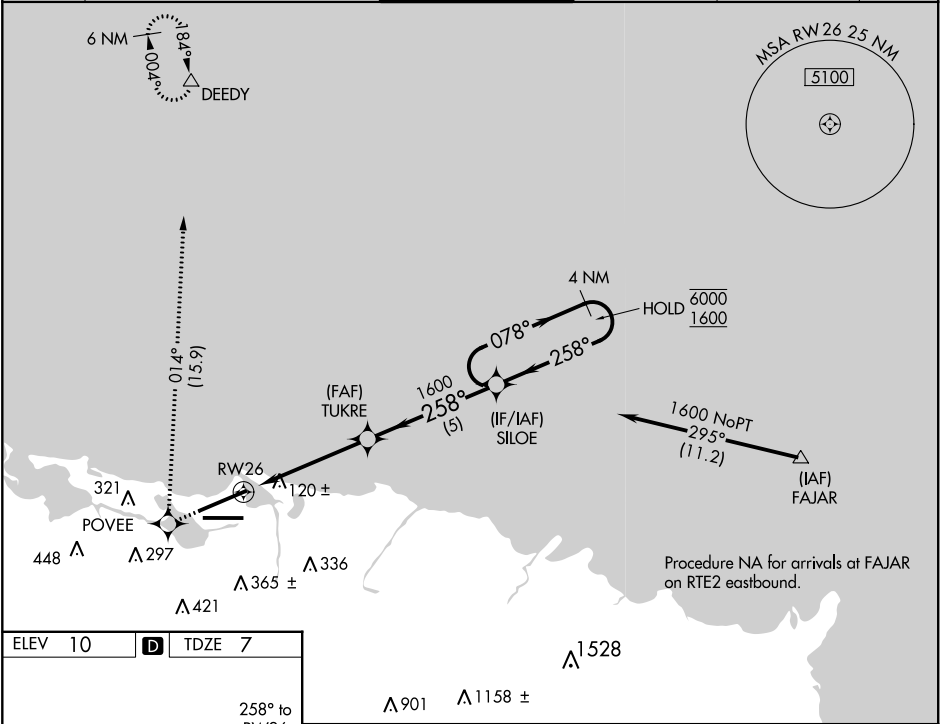


RNP APCH.		MISSED APPROACH: Climb to 3000 direct POVEE and right turn on track 014° direct DEEDY and hold.		
▼ For uncompensated Baro-VNAV systems, LNAV/VNAV ▲ NA below 22°C or above 54°C.				
D-ATIS 125.8	SAN JUAN APP CON 119.4 269.2 (WEST & SW) 120.9 290.2 (NORTH & EAST)	SAN JUAN TOWER 132.05 257.8	GND CON 121.9 348.6	CLNC DEL 126.4 284.6
				CPDLC



3000 ↑		POVEE 		DEEDY △		4 NM Holding Pattern	
* LNAV only						TUKRE 1600	