

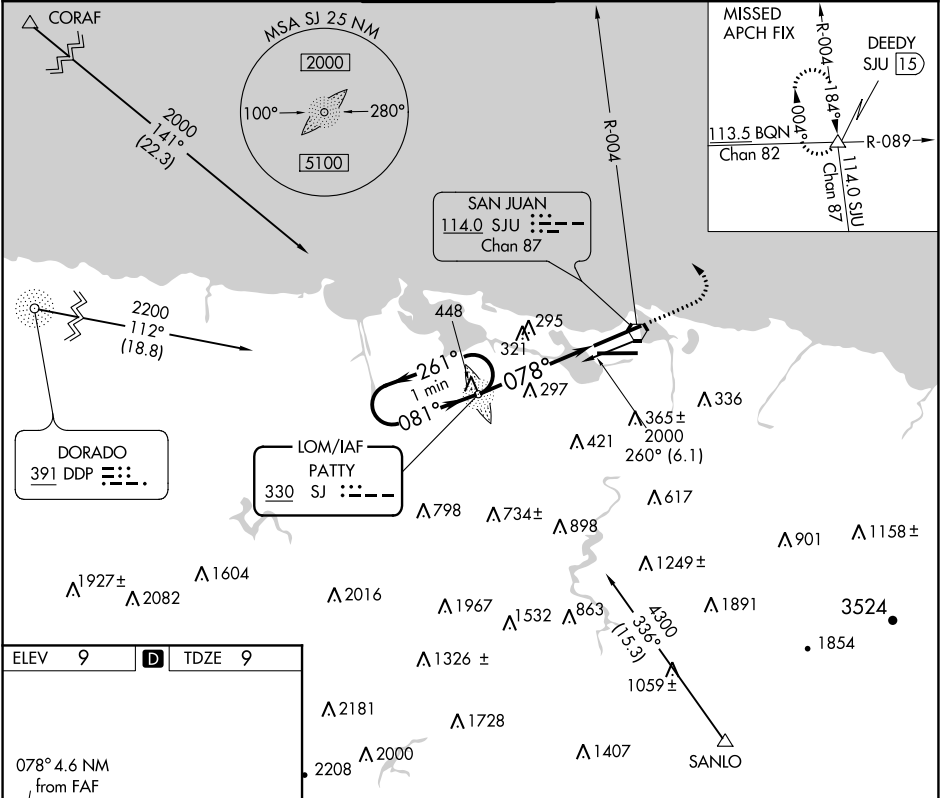
|        |         |          |      |
|--------|---------|----------|------|
| LOM SJ | APP CRS | Rwy Idg  | 9384 |
| 330    | 078°    | TDZE     | 9    |
|        |         | Apt Elev | 9    |

NDB RWY 8  
LUIS MUNOZ MARIN INTL (SJU)(TJSJ)

**MALS**

MISSED APPROACH: Climb to 2000, then climbing left turn to 3000 via SJU VORTAC R-004 to DEEDY Int/SJU 15 DME and hold.

|        |   |                |             |             |       |
|--------|---|----------------|-------------|-------------|-------|
| D-ATIS | SAN JUAN APP CON  | SAN JUAN TOWER | GND CON     | CLNC DEL    | CPDLC |
| 125.8  | 119.4 269.2<br>120.9 290.2<br>(WEST & SW)<br>(NORTH & EAST) | 132.05 257.8   | 121.9 348.6 | 126.4 284.6 |       |



ELEV 9 TDZE 9

078° 4.6 NM from FAF

10400 X 193

TWR 250

8016 X 150

REIL Rwy 26

HIRL Rwys 8-26 and 10-28

FAF to MAP 4.6 NM

|         |      |      |      |      |      |
|---------|------|------|------|------|------|
| Knots   | 60   | 90   | 120  | 150  | 180  |
| Min:Sec | 4:36 | 3:04 | 2:18 | 1:50 | 1:32 |

One Minute Holding Pattern

PATTY LOM

2000

261°

081°

1700

078°

3.36°

TCH 46

4.6 NM

| CATEGORY | A     | B           | C                      | D                      |
|----------|-------|-------------|------------------------|------------------------|
| S-8      | 600-¾ | 591 (600-¾) | 600-1<br>591 (600-1)   | 600-1½<br>591 (600-1½) |
| CIRCLING | 600-1 | 591 (600-1) | 600-1½<br>591 (600-1½) | 600-2<br>591 (600-2)   |

SE-3, 31 DEC 2020 to 28 JAN 2021

SE-3, 31 DEC 2020 to 28 JAN 2021