
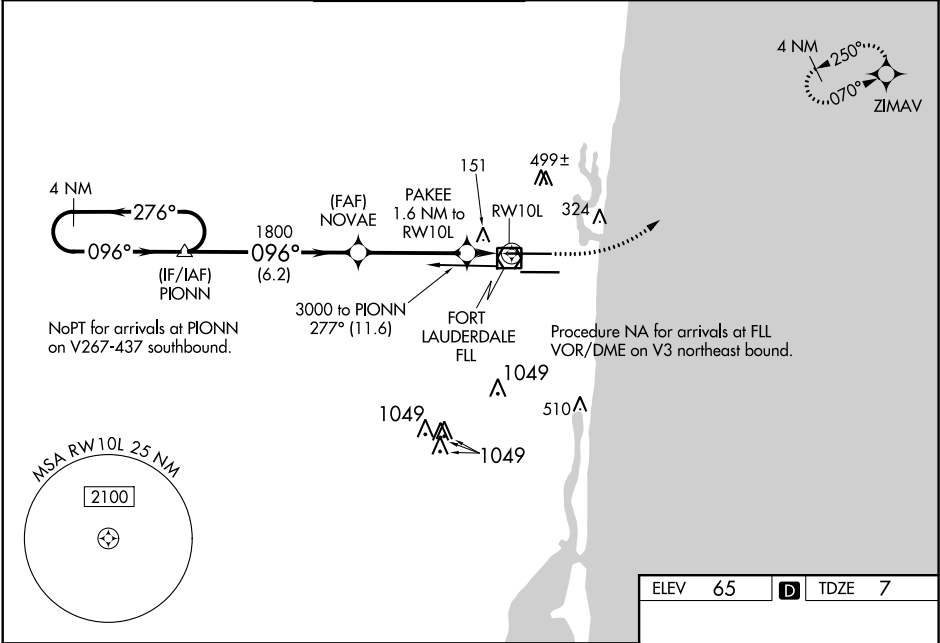


WAAS CH 48902 W10A	APP CRS 096°	Rwy Idg TDZE Apt Elev	8424 7 65
--	------------------------	-----------------------------	--------------------------------------

RNAV (GPS) Z RWY 10L
FORT LAUDERDALE/HOLLYWOOD INTL (FLL)

RNP APCH.				<div>MALSR</div> <div></div>	MISSED APPROACH: Climb to 800 then climbing left turn to 2000 direct ZIMAV and hold.	
<div><div><div>▼</div><div>▲</div></div><div>For uncompensated Baro-VNAV systems, LNAV/VNAV NA below 5°C (40°F) or above 54°C (130°F). For inop MALSR, increase LNAV Cat A, B visibility to RVR 5500. Rwy 10L helicopter visibility reduction below RVR 4000 NA. Inop table does not apply to LPV all Cats. LNAV procedure NA during simultaneous operations. Use of FD or AP required during simultaneous operations. Simultaneous approach authorized.</div></div>						
D-ATIS 135.0	MIAMI APP CON 133.775 285.6	FORT LAUDERDALE TOWER 119.3 257.8	GND CON 121.4	CLNC DEL 128.4	CPDLC	



VGSI and RNAV glidepath not coincident (VGSI Angle 3.00/TCH 66).		800	2000	ZIMAV
4 NM Holding Pattern		*LNAV only.		
2500 ← 276° 096° → 1800		*1.2 NM to RWY 10L		
GP 3.00° TCH 48		*560		
6.2 NM		3.9 NM	0.4 NM	1.2 NM
CATEGORY	A	B	C	D
LPV DA	257/40		250 (200-¾)	
LNAV/VNAV DA	477/57		470 (500-1¼)	
LNAV MDA	460/40	453 (400-¾)	460/45	453 (400-¾)
CIRCLING	680-1	615 (700-1)	800-2 735 (800-2)	800-2¼ 735 (800-2¼)

