

RNAV (GPS) Y RWY 28R
FORT LAUDERDALE/HOLLYWOOD INTL (FLL)

T For uncompensated Baro-VNAV systems, LNAV/VNAV NA below 5°C (40°F) or above 54°C (130°F). Inop table does not apply to LPV all Cats. LNAV procedure NA during simultaneous operations. Use of FD or AP required during simultaneous operations. Simultaneous approach authorized. For inop ALS, increase LNAV Cats C/D visibility to 1¼ SM.

MISSED APPROACH:
Climb to 800 then climbing
right turn to 4000 direct
HUKUK and hold, continue
climb-in-hold to 4000.

D-ATIS
135.0

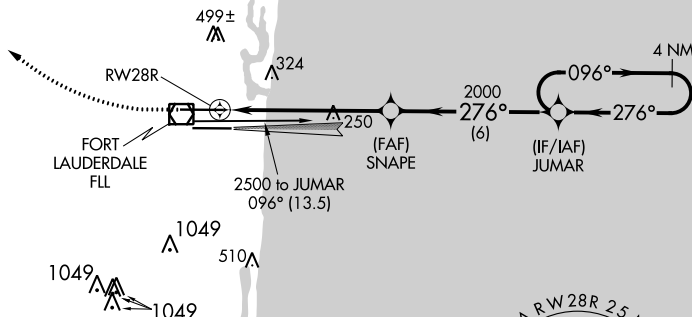
MIAMI APP CON
133.775 285.6

FORT LAUDERDALE TOWER
119.3 257.8

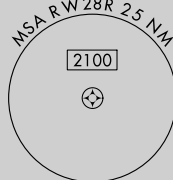
GND CON
121.4

CLNC DEL
128.4

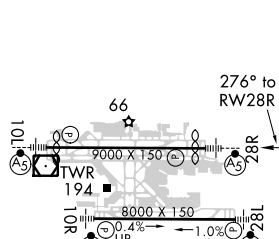
CPDLC



Procedure NA for arrival
on FLL VOR/DME airway
radials 013 CW 121.



ELEV	65	D	TDZE	7
------	----	----------	------	---



HIRL Rwy 10L-28R and 10R-28L

800	
-----	--

HUKU



VGSI and RNAV glidepath not coincident
(VGSI Angle 3.00/TCH 69).

*LNAV only.

2007-08-27

SNAPE

1


 γ).4 NM
Holding Pattern[illegible]

1

048

960 → 2500

GP 3.00°
TCH 49

CATEGORY		A	B	C	D
LPV	DA	257/40 250 (200-¾)			
LNAV/ VNAV	DA	594-1½ 587 (600-1½)			
LNAV	MDA	620/24 613 (700-½)	620-1⅔ 613 (700-1⅔)		
 CIRCLING		680-1 615 (700-1)	800-2 735 (800-2)	800-2¼ 735 (800-2¼)	

RNAV (GPS) Y RWY 28R