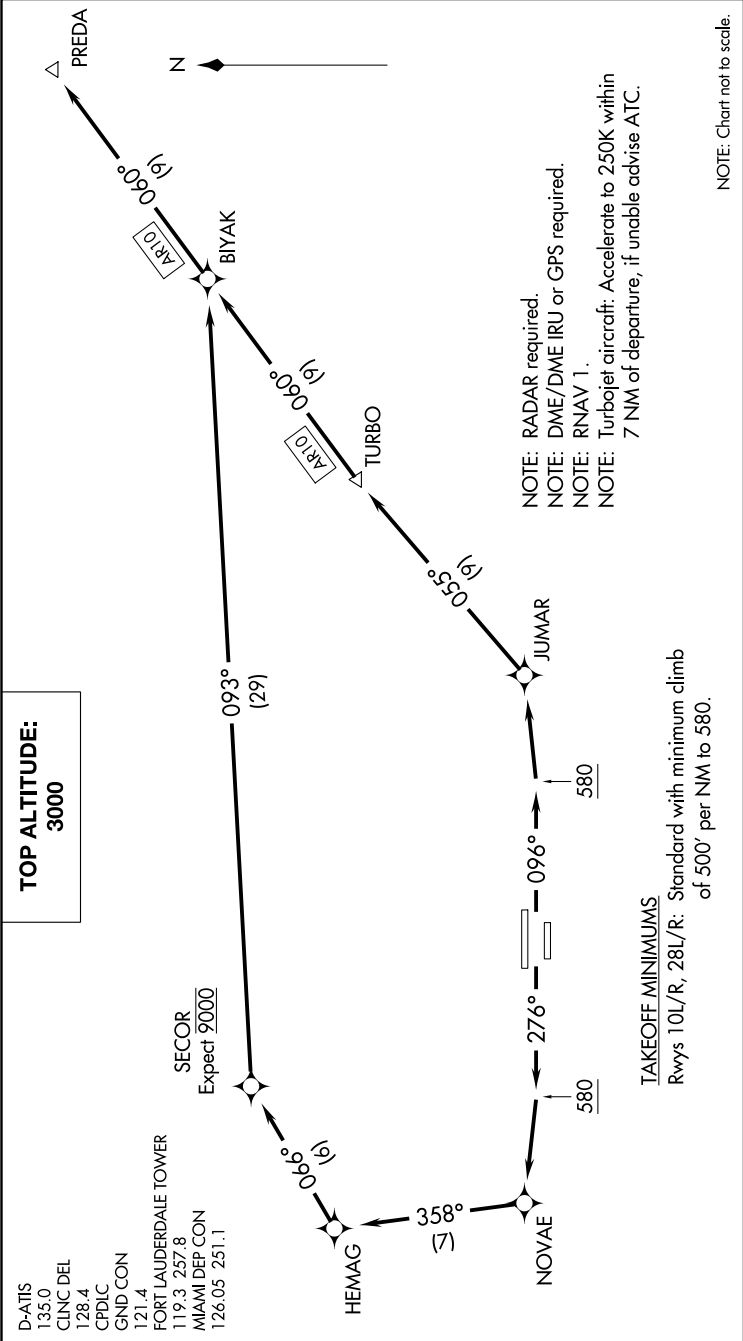


SE-3, 31 DEC 2020 to 28 JAN 2021



DEPARTURE ROUTE DESCRIPTION

TAKEOFF RWYS 10L/R: Climb heading 096° to 580, then direct JUMAR, then on depicted route to PREDA, thence. . . .  
TAKEOFF RWYS 28L/R: Climb heading 276° to 580, then direct NOVAE, then on depicted route to PREDA, thence. . . .  
. . . .maintain 3000 or as assigned by ATC. Expect clearance to filed altitude 10 minutes after departure.

SE-3, 31 DEC 2020 to 28 JAN 2021