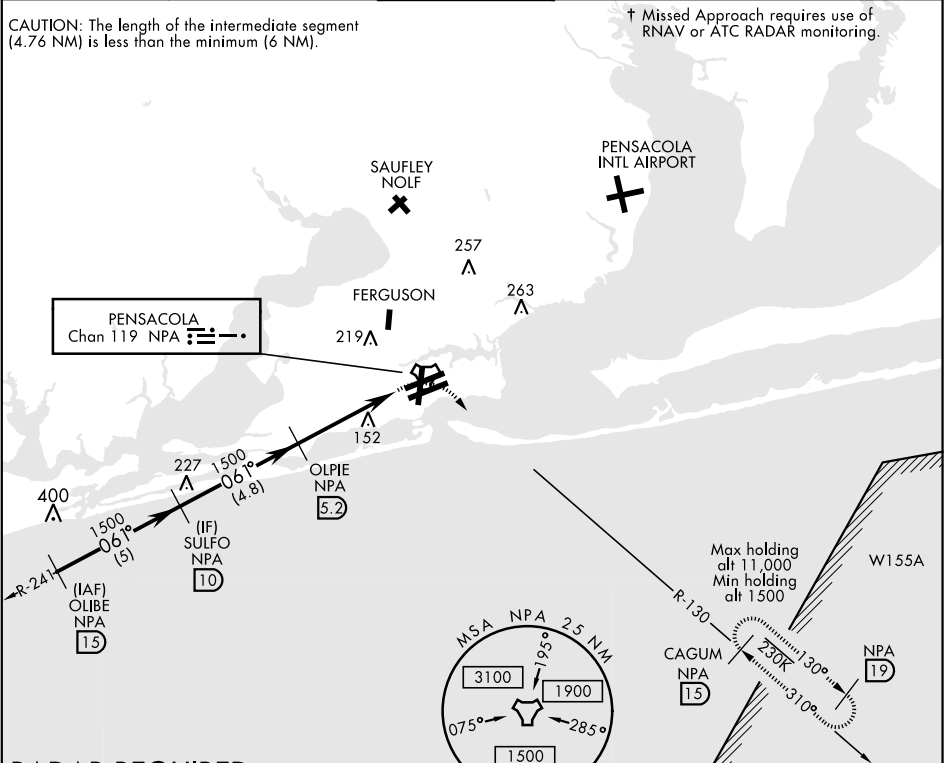


TACAN RWY 7L

TACAN NPA Chan <b>119</b>	APCH CRS <b>061°</b>	Rwy ldg TDZE <b>23</b> Arpt Elev <b>28</b>	AL-736 [USN]	PENSACOLA NAS (FORREST SHERMAN FLD) (KNPA)	
▼ * When ALS inop, increase CAT AB vis to 1 mile, CAT CDE vis to 1½ miles.			ALS F-1 A1	† MISSED APPROACH: Climbing right turn to 1500 via NPA TACAN R-130 to CAGUM and hold.	
ATIS <b>124.35 266.8</b>	PENSACOLA APP CON <b>120.65 270.8</b>	SHERMAN TOWER <b>120.7 340.2</b>	GND CON <b>121.7 336.4</b>	CLNC DEL <b>134.1 268.7</b>	ASR/ PAR



**RADAR REQUIRED**  
EMERG SAFE ALT 100 NM 3100

OLIBE  
NPA  
15

3600  
1500

SULFO  
10

1500

OLPIE  
5.2

1500

1500  
NPA  
R-130

1500  
NPA  
15

061°

3.00°  
TCH 56

4 NM

0.5

1.9

1.2

WABVU

TACAN

CATEGORY

A

B

C

D

E

S-7L \*

440-½

417

(500-½)

440-¾

417

(500-¾)

CIRCLING

520-1

492

(500-1)

540-1½

512

(600-1½)

580-2

552

(600-2)

61

TWR  
116

7136' x 200'

8001' x 200'

8000' x 200'

2510' x 15R

214

061° to TACAN

HIRL all Rwys

REIL all Rwys

TACAN RWY 7L

SE-3, 31 DEC 2020 TO 28 JAN 2021

SE-3, 31 DEC 2020 TO 28 JAN 2021