

PENSACOLA, FLORIDA

RNAV (GPS) RWY 25R

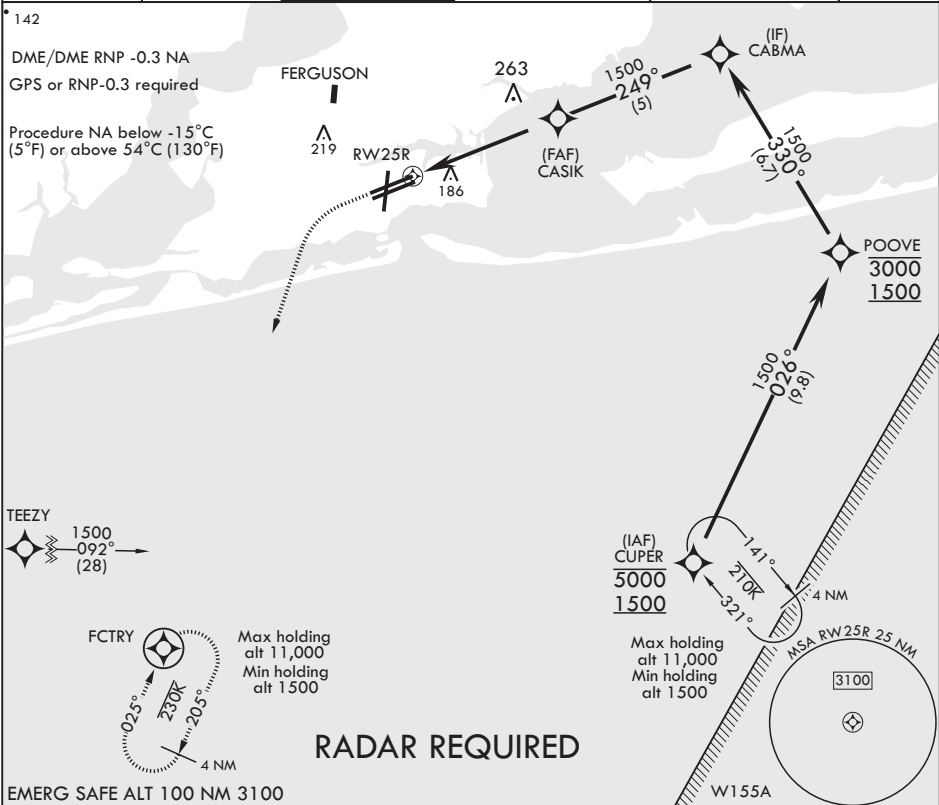
APCH CRS	Rwy Idg	8001
249°	TDZE	21
	Arprt Elev	28

AL-736 (USN)

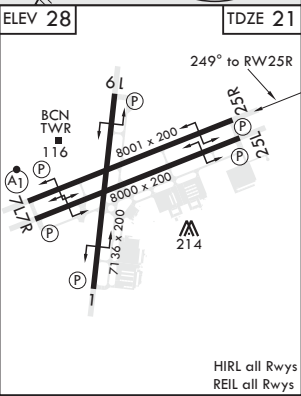
PENSACOLA NAS (FORREST SHERMAN FLD) (KNPA)

				MISSED APPROACH: Climb to 800 then climbing left turn to 1500 direct FCTRY and hold.	
--	--	--	--	--	--

ATIS 124.35 266.8	APP CON 120.65 270.8	SHERMAN TOWER 120.7 340.2	SHERMAN GND CON 121.7 336.4	SHERMAN CLNC DEL 134.1 268.7	ASR/PAR
----------------------	-------------------------	------------------------------	--------------------------------	---------------------------------	---------



				Not coincident with PAR GS		ELEV 28	TDZE 21
<p>*LNAV only</p> <p>RW25R</p> <p>*1.2 NM to RW25R</p> <p>CASIK</p> <p>249°</p> <p>1500</p> <p>CABMA</p> <p>1500</p> <p>GP 3.00° TCH 56</p> <p>4.5 NM</p>							
CATEGORY	A	B	C	D			
LNAV/VNAV DA	440-1 1/8	419 (500-1)	440-1 1/8	419 (500-1 1/8)			
LNAV MDA	440-1	419 (500-1)	440-1 1/2	419 (500-1 1/8)			
CIRCLING	520-1	492 (500-1)	540-1 1/2 512 (600-1 1/2)	580-2 552 (600-2)			



PENSACOLA, FLORIDA

30°21'N - 87°19'W PENSACOLA NAS (FORREST SHERMAN FLD) (KNPA)

Amdt 6 10OCT19

RNAV (GPS) RWY 25R

SE-3, 31 DEC 2020 to 28 JAN 2021

SE-3, 31 DEC 2020 to 28 JAN 2021