

PENSACOLA, FLORIDA

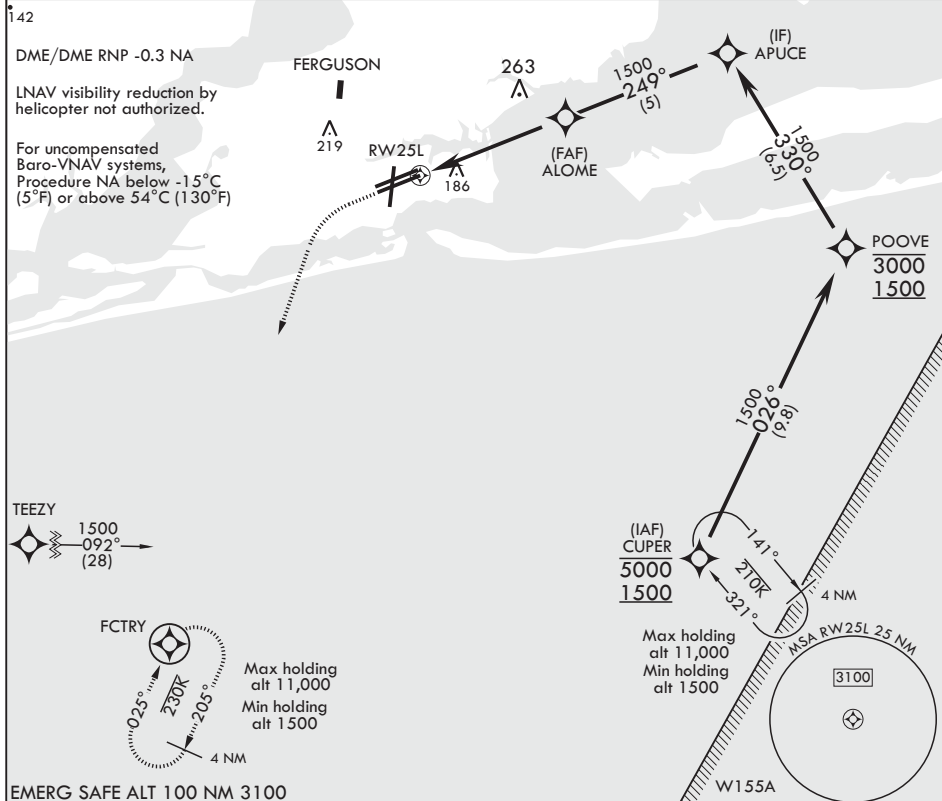
AL-736 (USN)

RNAV (GPS) RWY 25L

PENSACOLA NAS (FORREST SHERMAN FLD) (KNPA)

APCH CRS 249°	Rwy Idg 8000
	TDZE 22
	Arpt Elev 28

			MISSED APPROACH: Climb to 800 then climbing left turn to 1500 direct FCTRY and hold.		
ATIS 124.35 266.8	APP CON 120.65 270.8	SHERMAN TOWER 120.7 340.2	SHERMAN GND CON 121.7 336.4	SHERMAN CLNC DEL 134.1 268.7	ASR/PAR



CATEGORY	A	B	C	D
LNAN/VNAN DA	440-1 1/8	418	(500-1 1/8)	
LNAN MDA	440-1	418	(500-1)	440-1 1/8 418 (500-1 1/8)
CIRCLING	520-1	492	(500-1)	540-1 1/2 512 (600-1 1/2) 580-2 552 (600-2)

PENSACOLA, FLORIDA

30°21'N - 87°19'W PENSACOLA NAS (FORREST SHERMAN FLD) (KNPA)

Amdt 2 10OCT19

RNAV (GPS) RWY 25L

SE-3, 31 DEC 2020 to 28 JAN 2021

SE-3, 31 DEC 2020 to 28 JAN 2021