
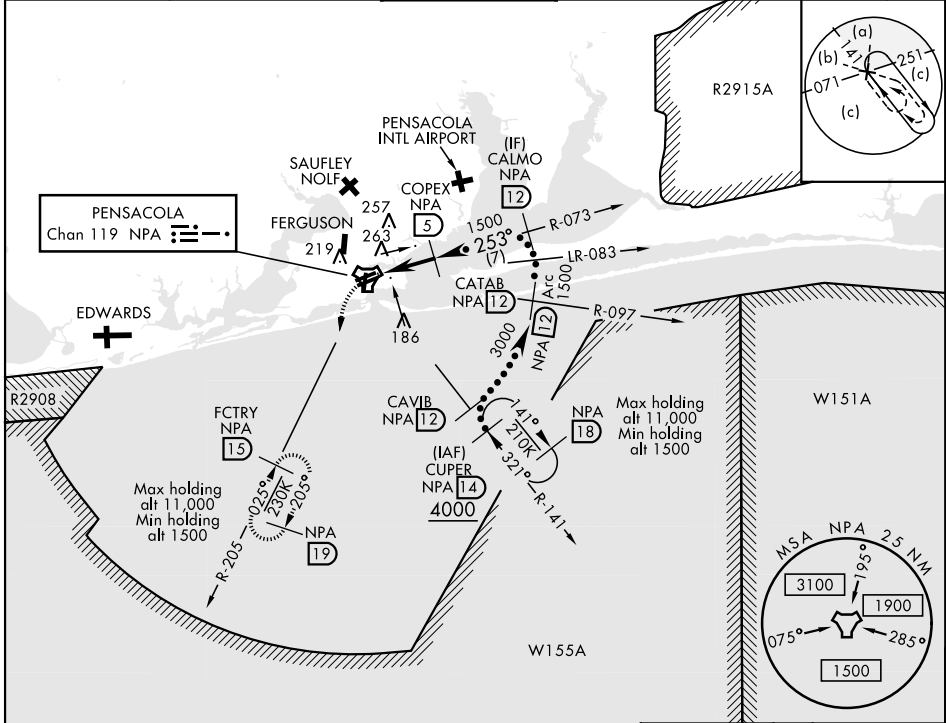


HI-TACAN RWY 25R

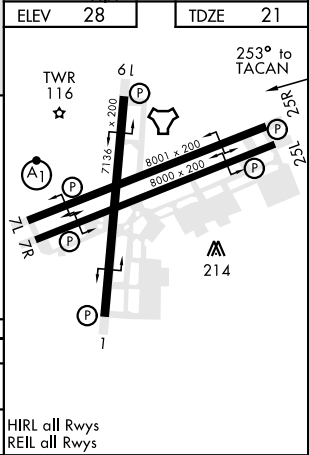
TACAN NPA Chan 119	APCH CRS 253°	Rwy Idg TDZE Arpt Elev 8001 21 28	JAL-736 [USN] PENSACOLA NAS (FORREST SHERMAN FLD) (KNPA)
------------------------------	-------------------------	--	--

		MISSED APPROACH: Climbing left turn to 1500 via NPA TACAN R-205 to FCTRY and hold.			
ATIS 124.35 266.8	PENSACOLA APP CON 120.65 270.8	SHERMAN TOWER 120.7 340.2	GND CON 121.7 336.4	CLNC DEL 134.1 268.7	ASR/ PAR



RADAR REQUIRED
EMERG SAFE ALT 100 NM 3100

1500 NPA R-205	FCTRY NPA 15	COPEX 5	CALMO R-073 12	CATAB R-097 12	CAVIB R-141 12	CUPER 14
TACAN	CUKUB 1.1	1500	1500	3000 1500	321°	4000
5	3.9 NM		Arc	12	3.03°	TCH 56
CATEGORY	C	D	E			
S-25R	440-1½	419 (500-1½)				
CIRCLING	540-1½ 512 (600-1½)	580-2	552 (600-2)			



HI-TACAN RWY 25R