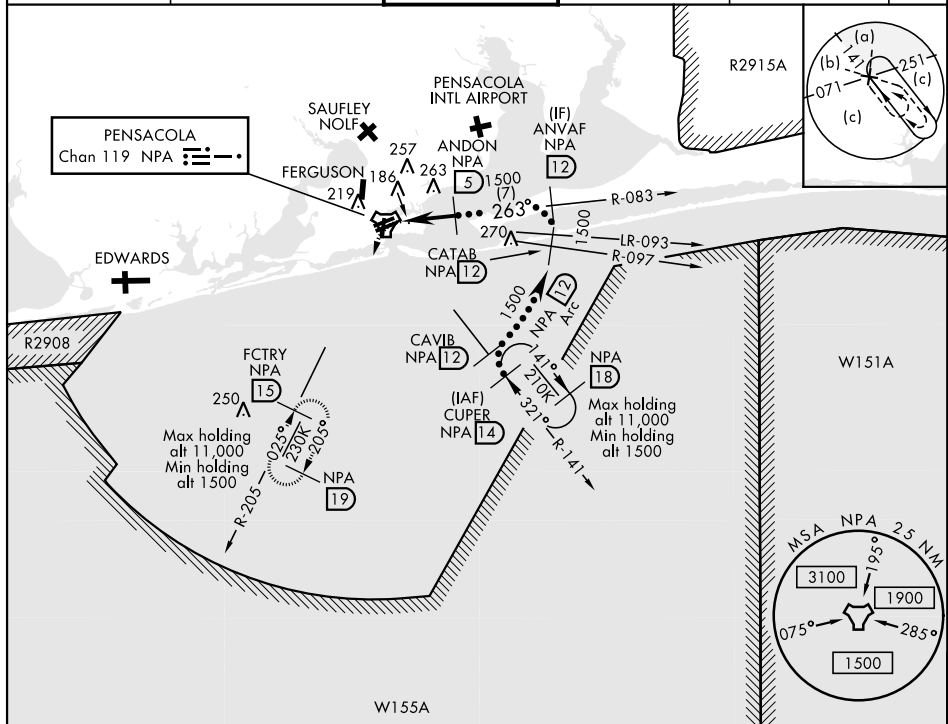


HI-TACAN RWY 25L

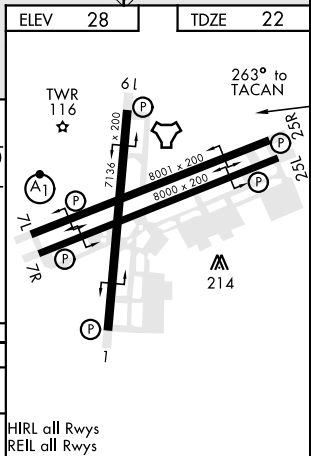
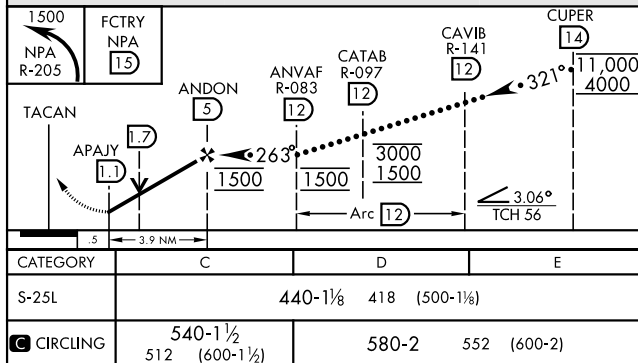
TACAN NPA Chan 119	APCH CRS 263°	Rwy Idg 8000 TDZE 22 Arpt Elev 28	JAL-736 [USN] PENSACOLA NAS (FORREST SHERMAN FLD) (KNPA)
------------------------------	-------------------------	--	--

V MISSED APPROACH: Climbing left turn to 1500 via NPA TACAN R-205 to FCTRY and hold.

ATIS 124.35 266.8	PENSACOLA APP CON 120.65 270.8	SHERMAN TOWER 120.7 340.2	GND CON 121.7 336.4	CLNC DEL 134.1 268.7	ASR/ PAR
-----------------------------	--	-------------------------------------	-------------------------------	--------------------------------	-------------



RADAR REQUIRED EMERG SAFE ALT 100 NM 3100



HI-TACAN RWY 25L