

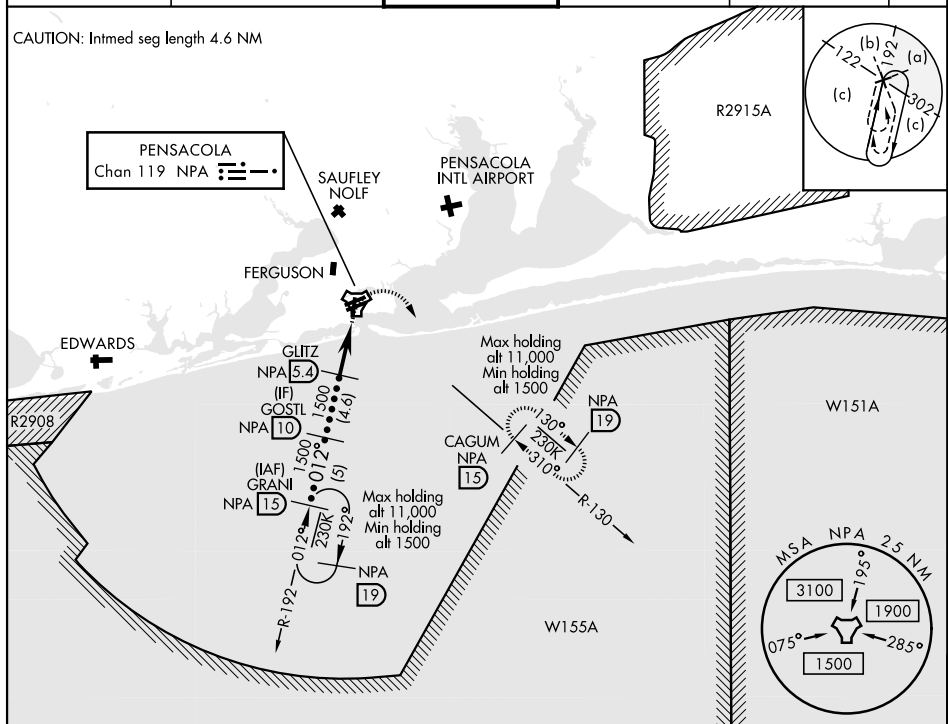
HI-TACAN RWY 1

TACAN NPA Chan 119	APCH CRS 012°	Rwy Idg 7136 TDZE 28 Arpt Elev 28	JAL-736 [USN] PENSACOLA NAS (FORREST SHERMAN FLD) (KNPA)
------------------------------	-------------------------	--	--

MISSED APPROACH: Climbing right turn to 1500 via NPA TACAN R-130 to CAGUM and hold.

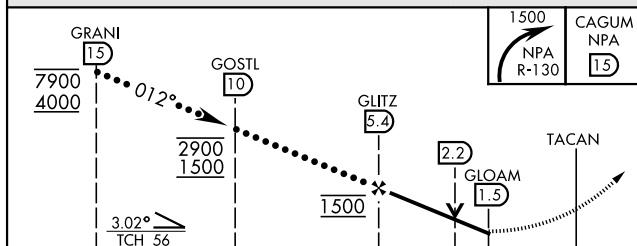
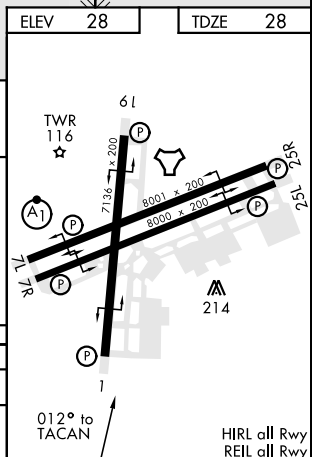
ATIS 124.35 266.8	PENSACOLA APP CON 120.65 270.8	SHERMAN TOWER 120.7 340.2	GND CON 121.7 336.4	CLNC DEL 134.1 268.7	ASR/ PAR
----------------------	-----------------------------------	------------------------------	------------------------	-------------------------	-------------

CAUTION: Intmed seg length 4.6 NM



RADAR REQUIRED

EMERG SAFE ALT 100 NM 3100

[illegible]

PENSACOLA, FLORIDA

30°21'N-87°19'W

PENSACOLA NAS (FORREST SHERMAN FLD) (KNPA)

HI-TACAN RWY 1

Amdt 5 02JAN20

SE-3, 31 DEC 2020 to 28 JAN 2021