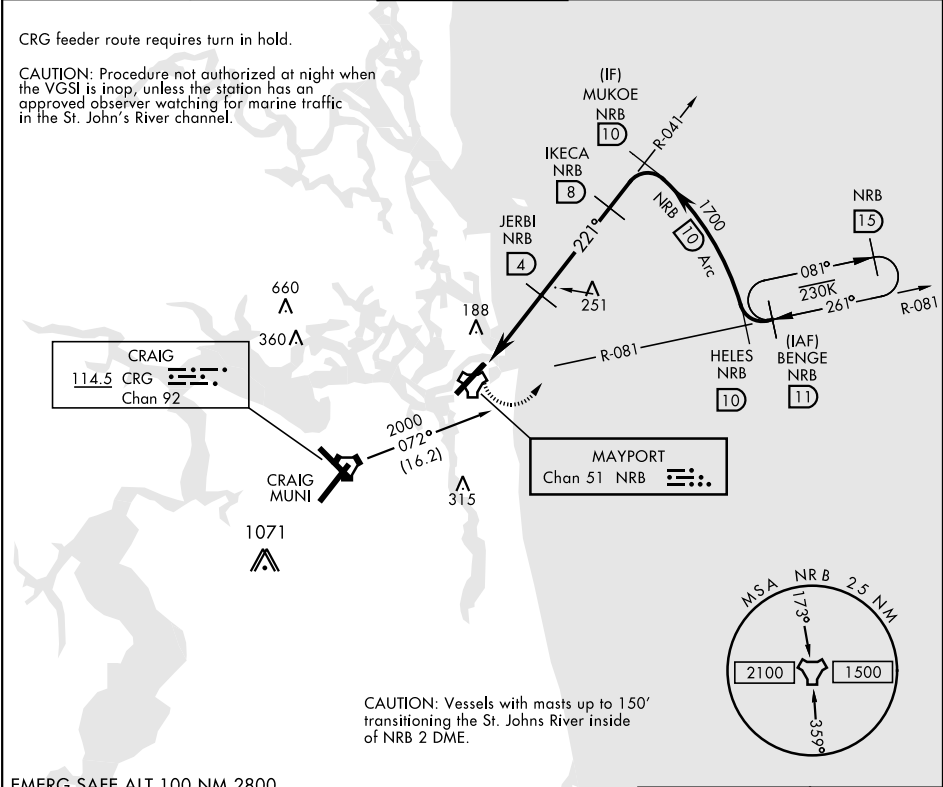


TACAN RWY 23

TACAN NRB Chan 51	APCH CRS 221°	Rwy Idg 8001 TDZE 15 Arpt Elev 15	AL-722 [USN] MAYPORT NS (ADM DAVID L. MC DONALD FLD) (KNRB)
-------------------	---------------	---	--

MISSED APPROACH: Climbing left turn to 2000 via NRB TACAN R-081 to BENG E and hold.				
ATIS ★ 236.775	JACKSONVILLE APP CON 124.9 308.4	MAYPORT TOWER ★ 118.75 239.3	GND CON 126.5 233.7	ASR/PAR



EMERG SAFE ALT 100 NM 2800

2000 NRB R-081	BENG E NRB 11					ELEV 15	TDZE 15
TACAN	LEBAF 1.0	JERBI 4	IKECA 8	MUKOE R-041 10	HELES 10	BENG E R-081 2000	
CATEGORY	A	B	C	D			
S-23	520-1	505 (600-1)	520-1 5/8	505 (600-1 3/8)			
CIRCLING	560-1	545 (600-1)	560-1 1/2	640-2			
			545 (600-1 1/2)	625 (700-2)			
					REIL Rwy 5-23 HIRL Rwy 5-23		

TACAN RWY 23