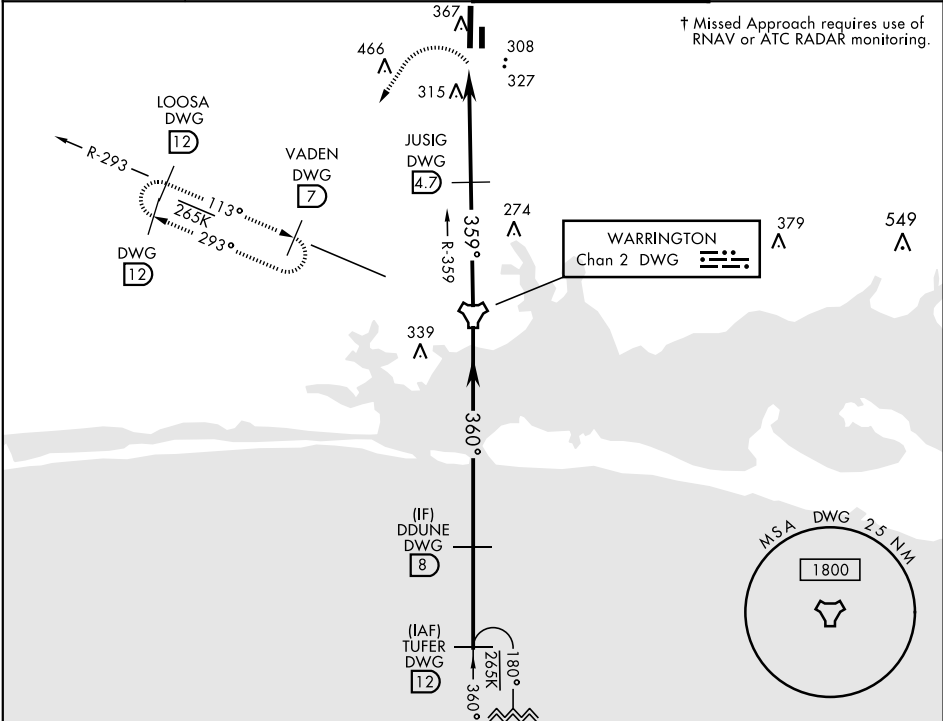


TACAN RWY 36

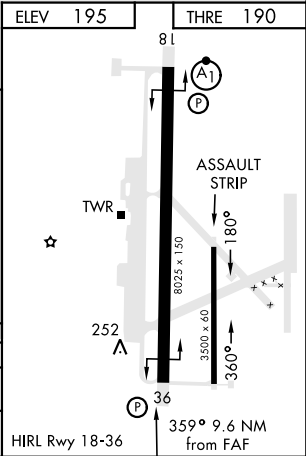
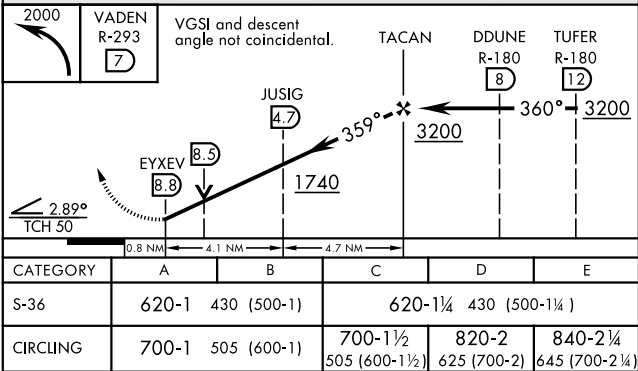
TACAN Chan 2	DWG 2	APCH CRS 359°	Rwy Idg THRE 190 Arprt Elev 195	AL-699 [USAF]	DUKE FLD (EGLIN AF AUX NR3)	(KEGI)
-----------------	----------	------------------	---------------------------------------	---------------	-----------------------------	--------

† MISSED APPROACH: Climbing left turn to 2000 direct DWG R-293/7 DME (VADEN) and hold.

ATIS ★ 244.575	EGLIN APP CON 125.1 281.45 (271°- 089°) 132.1 360.6 (090°- 270°)	DUKE TOWER ★ 133.2 290.425	GND CON 123.25 251.125
-------------------	--	-------------------------------	---------------------------



EMERG SAFE ALT 100 NM 3600



TACAN RWY 36

SE-3, 31 DEC 2020 to 28 JAN 2021

SE-3, 31 DEC 2020 to 28 JAN 2021