

RNAV (GPS) RWY 18

APCH CRS	Rwy Idg	8025
183°	THRE	189
	Arpt Elev	195

AL-699 [USAF]

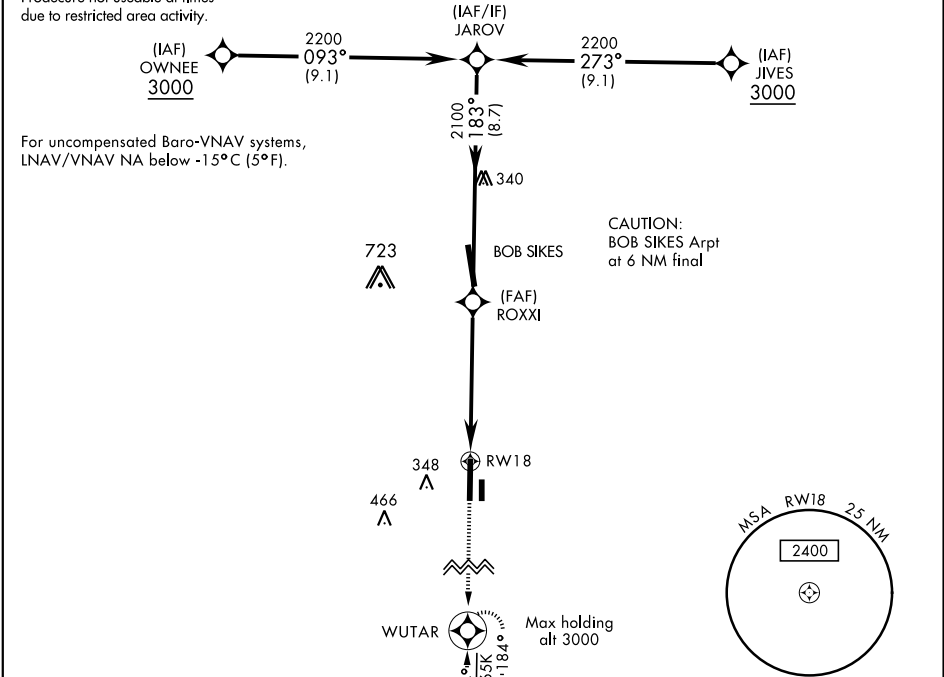
DUKE FLD (EGLIN AF AUX NR3) (KEGI)

DME/DME RNP-0.3 NA		ALSIF-1	MISSED APPROACH: Climb straight ahead to 3000 direct WUTAR and hold.	
ATIS ★	EGLIN APP CON	DUKE TOWER ★	GND CON	
244.575	125.1 281.45 (271° - 089°) 132.1 360.6 (090° - 270°)	133.2 290.425	123.25 251.125	

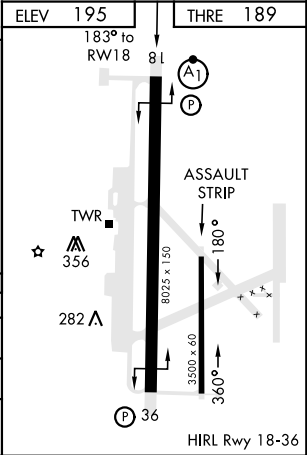
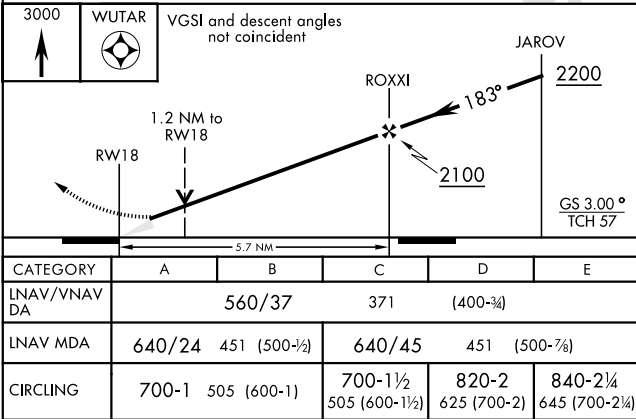
Procedure not useable at times due to restricted area activity.

For uncompensated Baro-VNAV systems, LNAV/VNAV NA below -15°C (5°F).

CAUTION: BOB SIKES Arpt at 6 NM final



EMERG SAFE ALT 100 NM 3600



RNAV (GPS) RWY 18