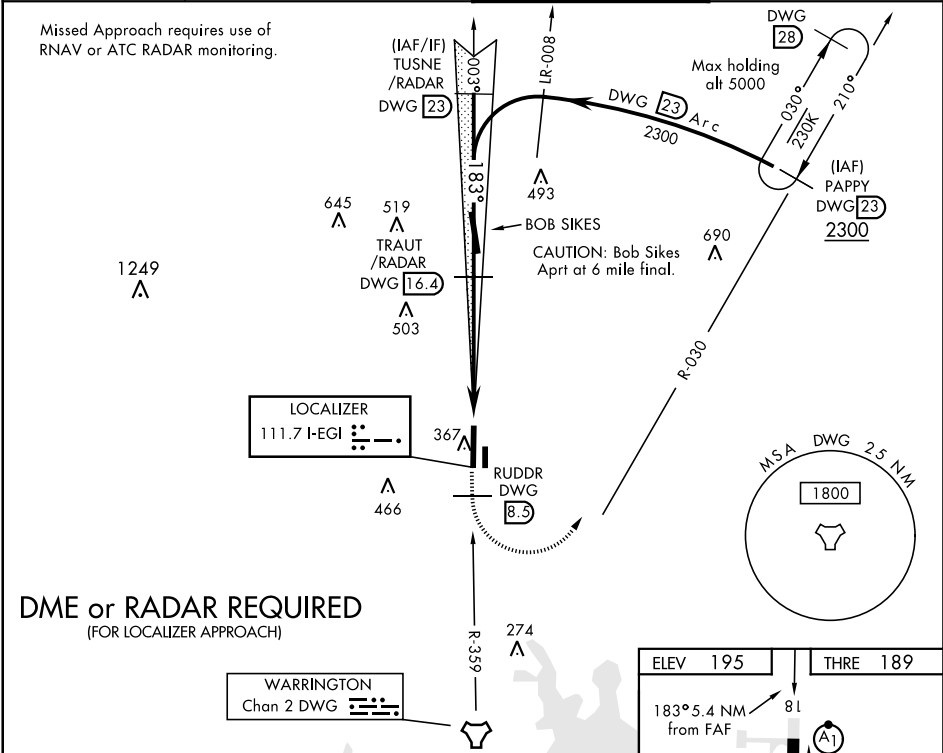


ILS or LOC RWY 18

LOC I-EGI 111.7	APCH CRS 183°	Rwy ldg THRE 189 Arprt Elev 195	AL-699 [USAF]	DUKE FLD (EGLIN AF AUX NR3) (KEGI)
* When ALS inop, increase RVR to 40, vis to ¾ mile. ** When ALS inop, increase RVR to 55, vis to 1 mile.			ALSF-1 A1	MISSED APPROACH: Climb on DWG R-359 to 8.5 DME (RUDDR), then climbing left turn to 2300 direct DWG R-030/23 DME (PAPPY) and hold.
ATIS ★ 244.575	EGLIN APP CON 125.1 281.45 (271° - 089°) 132.1 360.6 (090° - 270°)	DUKE TOWER ★ 133.2 290.425	GND CON 123.25 251.125	



TUSNE
/RADAR

23

2300

183°

GS 3.00°
TCH 59

VGSI and descent angle
not coincidental.

TRAUT
/RADAR

16.4

2000

12

POOLR

11.5

4.9 NM

.5 NM

2300

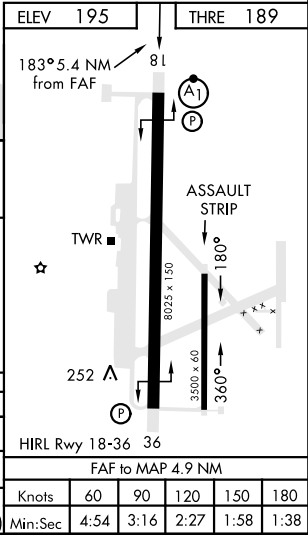
DWG
R-359

RUDDR

DWG
8.3

DWG
R-030

CATEGORY	A	B	C	D	E
S-ILS 18 *	389/24 200 (200-½)				
S-LOC 18 **	560/24 371 (400-½)	560/35 371 (400-¾)			
CIRCLING	700-1 505 (600-1)	700-1½ 505 (600-1½)	820-2 625 (700-2)	840-2 ¼ 645 (700-2¼)	



ILS or LOC RWY 18

SE-3, 31 DEC 2020 to 28 JAN 2021

SE-3, 31 DEC 2020 to 28 JAN 2021