

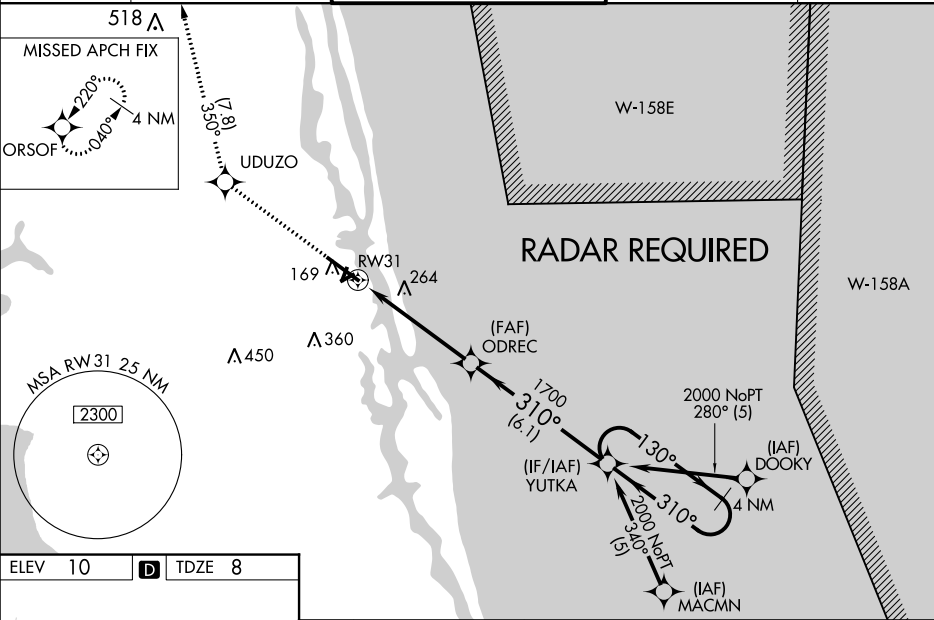
For uncompensated Baro-VNAV systems, LNAV/VNAV NA below -18°C (0°F) or above 54°C (130°F). DME/DME RNP-0.3 NA.

⚠ Circling Rwy 2, 6, 20, 24 NA at night. For inop ALS, increase LNAV/VNAV all Cats visibility to ¾ SM and LNAV Cat C/D visibility to 1¾ SM.

MAISR

MISSED APPROACH: Climb to 2000 direct UDUZO and on track 350° to ORSOF and hold.

ATIS 119.625	JACKSONVILLE APP CON 120.75	ST AUGUSTINE TOWER ★ 127.625 (CTAF) 269.475	GND CON 121.175 251.125	UNICOM 122.95
-----------------	--------------------------------	--	----------------------------	------------------



2000 UDUZO tr 350° ORSOF

*LNAV only.

RW31

1.4 NM to RW31

ODRAC 1700

YUTKA 4 NM Holding Pattern

130° 2000

310°

GP 3.00° TCH 54

CATEGORY	A	B	C	D
LPV DA		218-½ 210 (300-½)		
LNAV/VNAV DA		292-½ 284 (300-½)		
LNAV MDA	520-½ 512 (600-½)		520-1 512 (600-1)	
CIRCLING	520-1 510 (600-1)	580-1 570 (600-1)	660-1¾ 650 (700-1¾)	780-2½ 770 (800-2½)

MIRL Rwy 2-20 and 6-24

HIRL Rwy 13-31

TWR 99 ±

310° to RW31