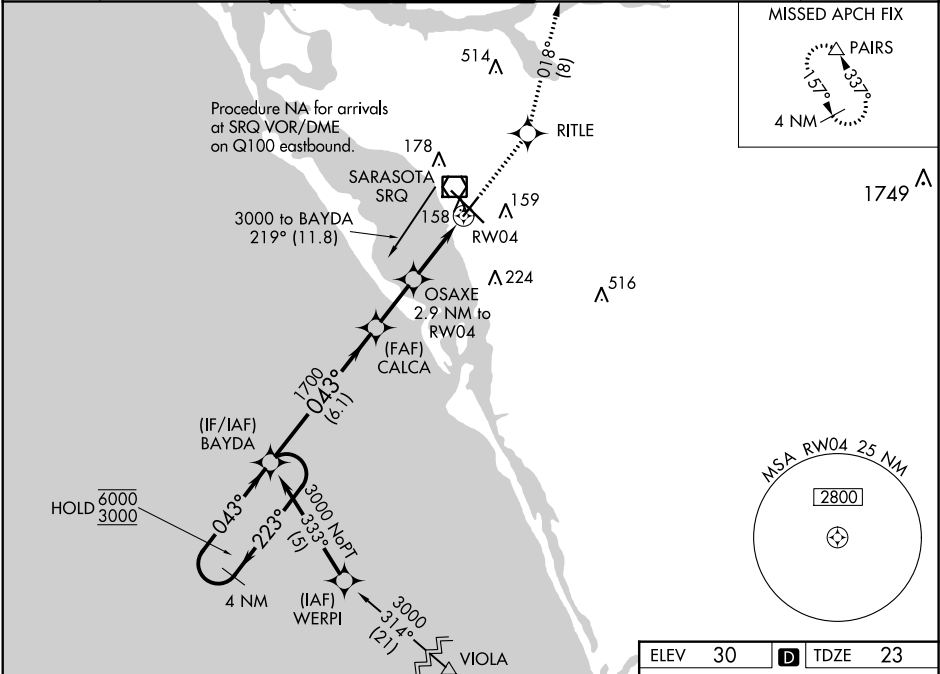


WAAS CH 99420 W04A	APP CRS 043°	Rwy Idg 5006 TDZE 23 Apt Elev 30
--	------------------------	---

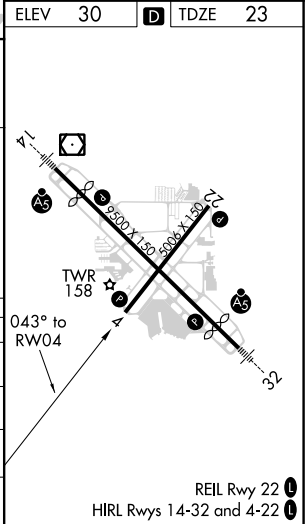
RNAV (GPS) RWY 4
SARASOTA/BRADENTON INTL (SRQ)

RNP APCH.	<p>▼ Rwy 4 helicopter visibility reduction below ¾ SM NA. For uncompensated Baro-VNAV systems, LNAV/VNAV NA below -15°C or above 43°C.</p>	MISSED APPROACH: Climb to 3000 direct RITLE and on track 018° to PAIRS and hold, continue climb-in-hold to 3000.
-----------	--	---

ATIS 124.375	TAMPA APP CON 119.65 353.575	SARASOTA TOWER ★ 120.1(CTAF) 0 256.8	GND CON 121.9 273.6	CLNC DEL 118.25	UNICOM 122.95
------------------------	--	--	-------------------------------	---------------------------	-------------------------



VGSi and RNAV glidepath not coincident (VGSi Angle 3.00/TCH 46).		3000	RITLE	PAIRS
4 NM Holding Pattern BAYDA			↑	tr 018°
6000 3000 ← 223° 043° →				△
GP 3.00° TCH 57				
CALCA		1700	OSAXE 2.9 NM to RWY04	*LNAV only.
1700			*1.1 NM to RWY04	
6.1 NM		2.2 NM	1.8 NM	1.1 NM
CATEGORY	A	B	C	D
LPV DA		317-1	294 (300-1)	
LNAV/VNAV DA		319-1	296 (300-1)	
LNAV MDA	420-1	397 (400-1)	420-1½	397 (400-1½)
CIRCLING	500-1	470 (500-1)	500-1½ 470 (500-1½)	580-2 550 (600-2)



SE-3, 31 DEC 2020 to 28 JAN 2021

SE-3, 31 DEC 2020 to 28 JAN 2021