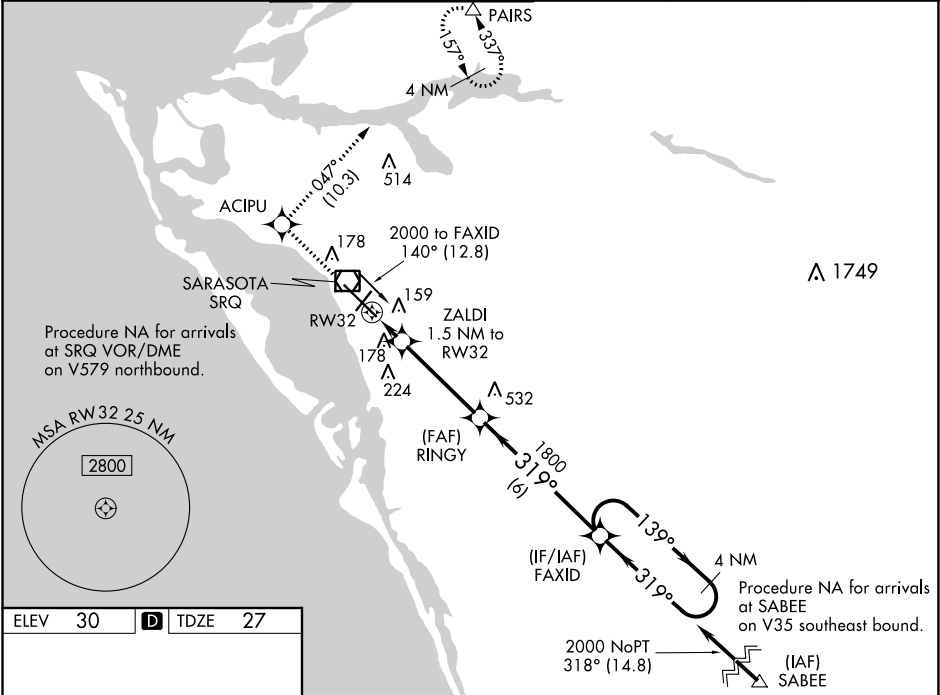


WAAS CH 72605 W32A	APP CRS 319°	Rwy Idg 7510 TDZE 27 Apt Elev 30
--	------------------------	---

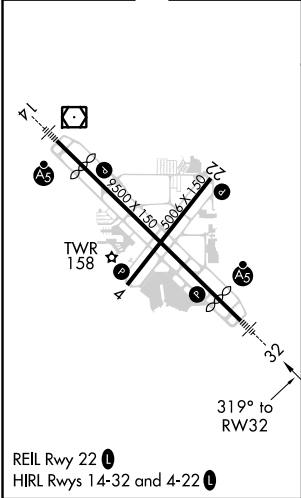
RNAV (GPS) RWY 32
SARASOTA/BRADENTON INTL (SRQ)

RNP APCH. ▼ For uncompensated Baro-VNAV systems, LNAV/VNAV NA below -1.5°C or above 43°C. When control tower closed, LPV and LNAV/VNAV NA; increase LNAV all Cats visibility to 1 mile. When control tower closed, inop table does not apply to LNAV Cats A and B. When control tower closed, for inop MALSR, increase LNAV Cat C and D visibility to 1½ mile.	MALSR 45	MISSED APPROACH: Climb to 3000 direct ACIPU and on track 047° to PAIRS and hold, continue climb-in-hold to 3000.
---	-------------	--

ATIS 124.375	TAMPA APP CON 119.65 353.575	SARASOTA TOWER ★ 120.1(CTAF) 256.8	GND CON 121.9 273.6	CLNC DEL 118.25	UNICOM 122.95
------------------------	--	--	-------------------------------	---------------------------	-------------------------



ELEV 30	D	TDZE 27
---------	---	---------



3000	ACIPU	tr 047°	PAIRS	FAXID	4 NM Holding Pattern
*LNAV only.	ZALDI 1.5 NM to RW32	RINGY 1800	1800	139°	2000
RW32	540*	319°	1800	319°	GP 3.00° TCH 53
1.5 NM	3.9 NM	6 NM			
CATEGORY	A	B	C	D	
LPV DA	227-½	200 (200-½)			
LNAV/ VNAV DA	463-1	436 (500-1)			
LNAV MDA	440-½	413 (500-½)	440-¾	413 (500-¾)	
CIRCLING	500-1	470 (500-1)	500-1½	580-2	550 (600-2)

SE-3, 31 DEC 2020 to 28 JAN 2021

SE-3, 31 DEC 2020 to 28 JAN 2021