
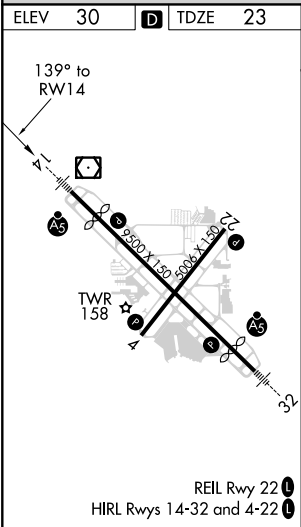
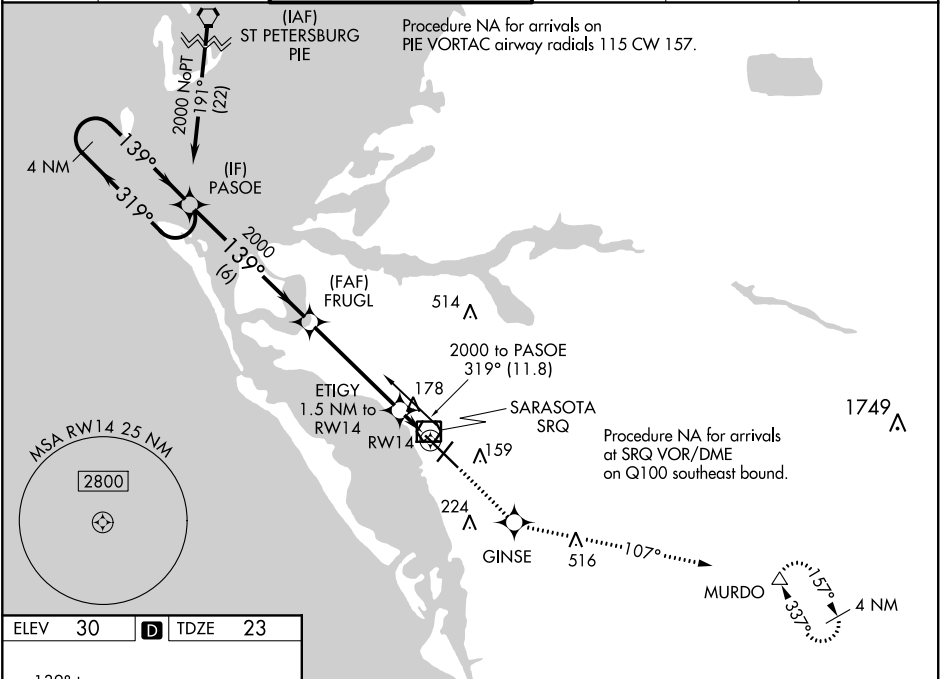


WAAS CH 86705 W14A	APP CRS 139°	Rwy Idg 7540 TDZE 23 Apt Elev 30
----------------------------------------	------------------------	-------------------------------------------------------------

RNAV (GPS) RWY 14

SARASOTA/BRADENTON INTL (SRQ)

RNP APCH.			<div>MALSR</div> <div></div>	MISSED APPROACH: Climb to 3000 direct GINSE and on track 107° to MURDO and hold.	
▼ For uncompensated Baro-VNAV systems, LNAV/VNAV NA below -15°C or above 43°C. When control tower closed, LPV and LNAV/VNAV NA; increase LNAV all Cats visibility to 1 mile. When control tower closed, inop table does not apply to LNAV Cats A and B. When control tower closed, for inop MALSR, increase LNAV Cats C and D visibility to 1½ mile.					
ATIS 124.375	TAMPA APP CON 119.65 353.575	SARASOTA TOWER ★ 120.1(CTAF) 0 256.8	GND CON 121.9 273.6	CLNC DEL 118.25	UNICOM 122.95



4 NM Holding Pattern		PASOE		FRUGL		3000 ↑		GINSE ✦		tr 107°		MURDO △	
2000 ← 319° 139° →		2000		2000		ETIGY 1.5 NM to RW14		*LNAV only.					
GP 3.00° TCH 54				*560		RW14							
		6 NM		4.5 NM		1.5 NM							
CATEGORY		A		B		C		D					
LPV DA				223-½ 200 (200-½)									
LNAV/ VNAV DA				489-1⅛ 466 (500-1⅛)									
LNAV MDA		440-½ 417 (500-½)				440-¾ 417 (500-¾)							
CIRCLING		500-1 470 (500-1)				500-1½ 470 (500-1½)		580-2 550 (600-2)					