
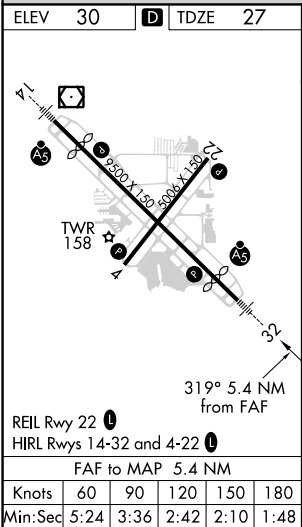
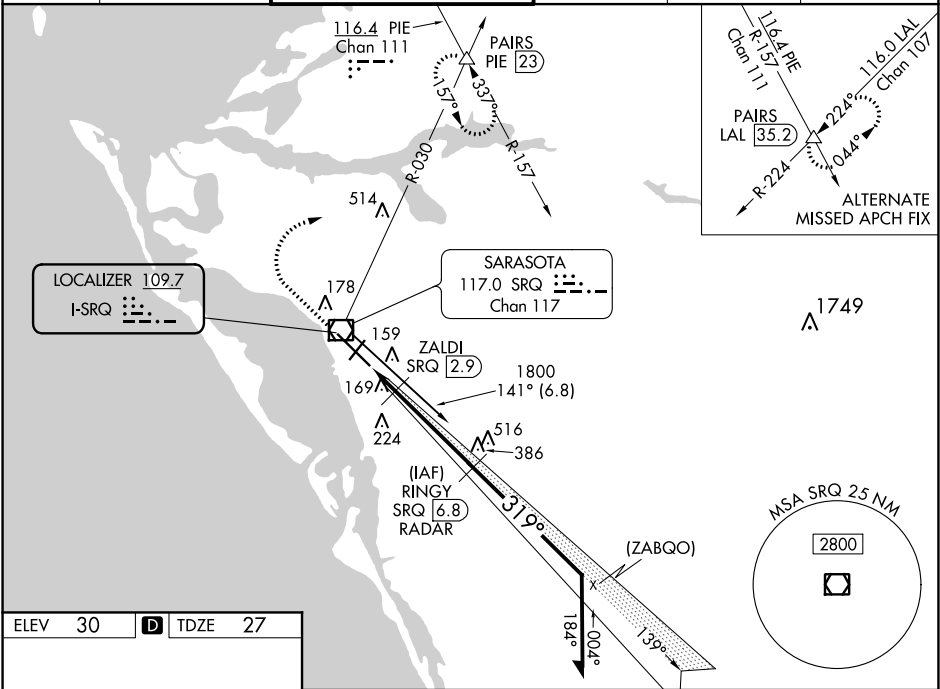


LOC I-SRQ 109.7	APP CRS 319°	Rwy Idg TDZE Apt Elev 7510 27 30
---------------------------	------------------------	--

ILS or LOC RWY 32
SARASOTA/BRADENTON INTL (SRQ)

DME or RADAR required.			MALSR 	MISSED APPROACH: Climb to 1000 then climbing right turn to 3000 on heading 065° and SRQ VOR/DME R-030 to PAIRS INT/PIE VORTAC 23 DME and hold, continue climb-in-hold to 3000.		
Autopilot coupled approach NA below 840. When control tower closed, S-ILS 32 Minimums NA, increase S-LOC 32 and ZALDI Fix Minimums S-LOC 32 all Cats visibility to 1. When control tower closed, inop table does not apply to S-LOC 32 and ZALDI Fix Minimums all Cats.						
ATIS 124.375	TAMPA APP CON 119.65 353.575	SARASOTA TOWER ★ 120.1(CTAF) 0 256.8	GND CON 121.9 273.6	CLNC DEL 118.25	UNICOM 122.95	



1000	3000	SRQ R-030	PAIRS	RINGY SRQ 6.8 RADAR	Remain within 10 NM
↑	hdg 065°		△		
*LOC only.					
1.5 NM 3.9 NM					
CATEGORY	A	B	C	D	
S-ILS 32	227-½ 200 (200-½)				
S-LOC 32	480-½	453 (500-½)	480-⅞	453 (500-⅞)	
CIRCLING	500-1	470 (500-1)	500-1½	580-2	
ZALDI FIX MINIMUMS					
S-LOC 32	360-½ 333 (400-½)				
CIRCLING	500-1	470 (500-1)	500-1½	580-2	
			470 (500-1½)	550 (600-2)	

SE-3, 31 DEC 2020 to 28 JAN 2021

SE-3, 31 DEC 2020 to 28 JAN 2021