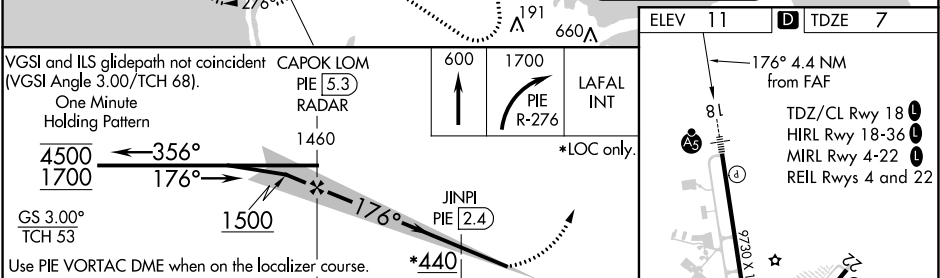
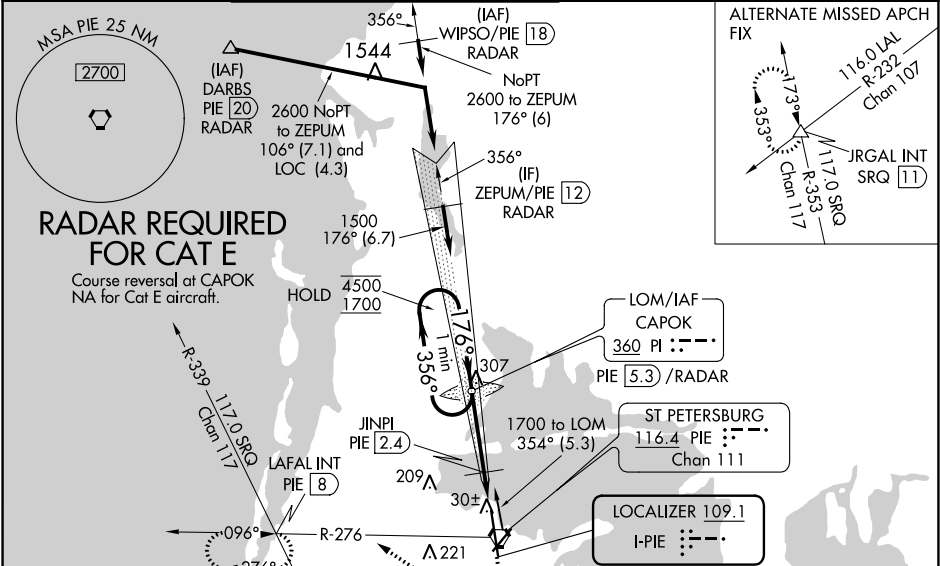


LOC I-PIE <b>109.1</b>	APP CRS <b>176°</b>	Rwy Idg TDZE Apt Elev <b>9180</b> <b>7</b> <b>11</b>
---------------------------	------------------------	---

ILS or LOC RWY 18  
ST PETE-CLEARWATER INTL (PIE)

DME, RADAR, or ADF required.		MALSR	MISSED APPROACH: Climb to 600 then climbing right turn to 1700 on PIE VORTAC R-276 to LAFAL INT/PIE 8 DME and hold.
<p>For inop ALS, increase S-ILS 18 Cat E visibility to RVR 4000 and S-LOC 18 Cat A/B to RVR 5500 and C/D/E visibility to 1¼ SM. JINPI FIX MINIMUMS: For inop ALS, increase S-LOC 18 Cat C, D, and E visibility to RVR 4500.</p> <p>** Use DME from PIE VORTAC.</p>			

ATIS <b>134.5</b>	TAMPA APP CON <b>125.3 316.05</b>	ST PETERSBURG-CLEARWATER TOWER ★ <b>118.3 (CTAF) 0 257.8</b>	GND CON <b>121.9 348.6</b>	CLNC DEL <b>120.6 350.2</b>	UNICOM <b>122.95</b>
----------------------	--------------------------------------	---	-------------------------------	--------------------------------	-------------------------



CATEGORY	A	B	C	D	E
S-ILS 18	207/18 200 (200-½)				
S-LOC 18	440/24	433 (500-½)	440/40	433 (500-¾)	
CIRCLING	520-1	509 (600-1)	640-1¾ 629 (700-1¾)	680-2 669 (700-2)	960-3 949 (1000-3)
**JINPI FIX MINIMUMS					
S-LOC 18	300/24 293 (300-½)				
CIRCLING	520-1	509 (600-1)	640-1¾ 629 (700-1¾)	680-2 669 (700-2)	960-3 949 (1000-3)

FAF to MAP 4.4 NM					
Knots	60	90	120	150	180
Min:Sec	4:24	2:56	2:12	1:46	1:28

SE-3, 31 DEC 2020 to 28 JAN 2021

SE-3, 31 DEC 2020 to 28 JAN 2021