
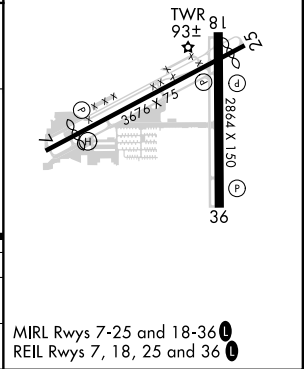
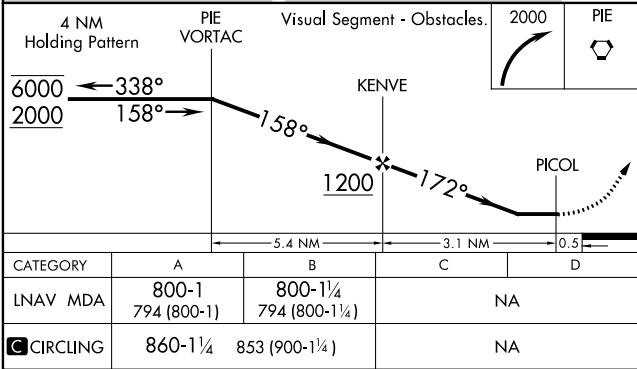
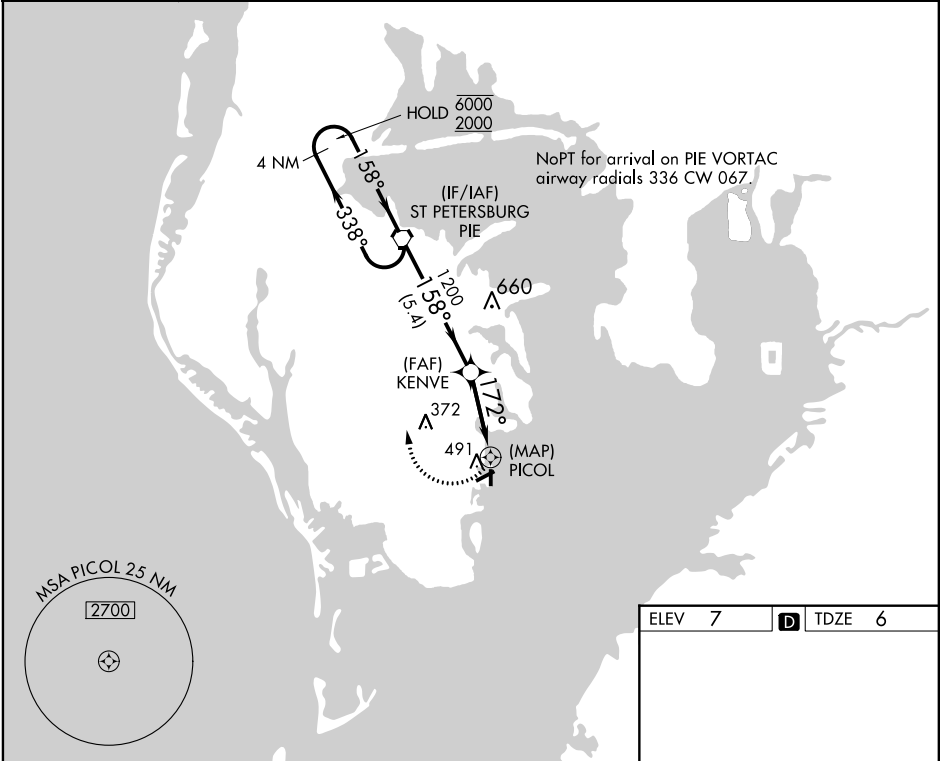


APP CRS	Rwy Idg	2864
172°	TDZE	6
	Apt Elev	7

RNAV (GPS) RWY 18
ALBERT WHITTED (SPG)

RNP APCH.		MISSED APPROACH: Climbing right turn to 2000 direct PIE VORTAC and hold.
	Circling Rwy 36 NA at night. Rwy 18 helicopter visibility reduction below 3/4 SM NA.	

ASOS 118.875	TAMPA APP CON 119.65 316.05 (EAST) 125.3 316.05 (WEST)	ALBERT WHITTED TOWER ★ 127.4 (CTAF) 257.6	GND CON 121.8	UNICOM 122.95
-----------------	--	--	------------------	------------------



SE-3, 31 DEC 2020 to 28 JAN 2021

SE-3, 31 DEC 2020 to 28 JAN 2021