

PALM BEACH APP CON  
125.2 343.6  
D-ATIS  
123.75

(RSTAA.PRRIE5) 20198  
PRRIE FIVE ARRIVAL (RNAV)

AL-560 (FAA)

BOCA RATON (BCT)  
BOCA RATON, FLORIDA

ARRIVAL ROUTE DESCRIPTION

BAGGS TRANSITION (BAGGS.PRRIE5)  
MOJIE TRANSITION (MOJIE.PRRIE5)  
SARASOTA TRANSITION (SRQ.PRRIE5)

NOTE: RADAR required.  
NOTE: RNAV 1.  
NOTE: DME/DME/IRU or GPS required.  
NOTE: Turbojet and turboprop aircraft only.

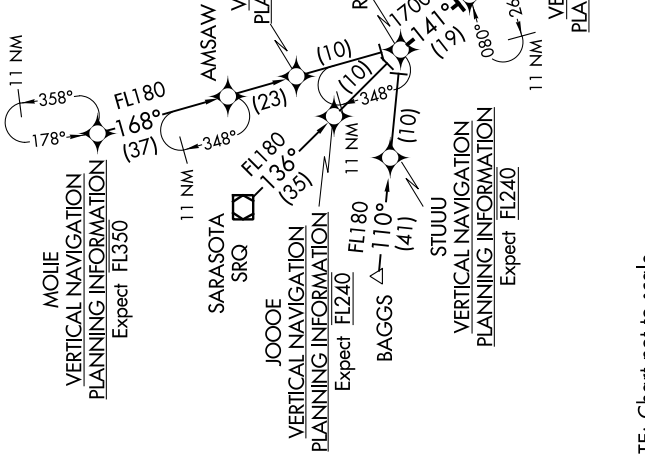
From RSTAA on track 141° to WLACE, then on track 080° to PRRIE, then on track 099° to TARTY, then on track 150° to HEDLY.

LANDING RWY 5: From HEDLY on track 111° to CAYSL, then on heading 180° or as assigned by ATC. Expect RADAR vectors to final approach course.

LANDING RWY 23: From HEDLY on track 103° to WEMSO. Expect RNAV (RNP) Z RWY 23 approach, or RADAR vectors to final approach course.

LOST COMMUNICATIONS:

Continue to CAYSL, then turn left direct PBI VORTAC, then direct CUPED and hold.



NOTE: Chart not to scale.

PRRIE FIVE ARRIVAL (RNAV)  
(RSTAA.PRRIE5) 13SEP18

BOCA RATON, FLORIDA  
BOCA RATON (BCT)