

TACAN Z RWY 6

TACAN HST
Chan 19

APCH CRS
056°

Rwy ldg 11,201
TDZE 5
Arpt Elev 6

AL-494 [USAF]

HOMESTEAD ARB (KHST)

⚠ * When ALS inop, increase CAT AB RVR to 55, vis to 1 mile; CAT CDE vis to 1½ miles.
** Circling NA NW of Rwy 6-24.

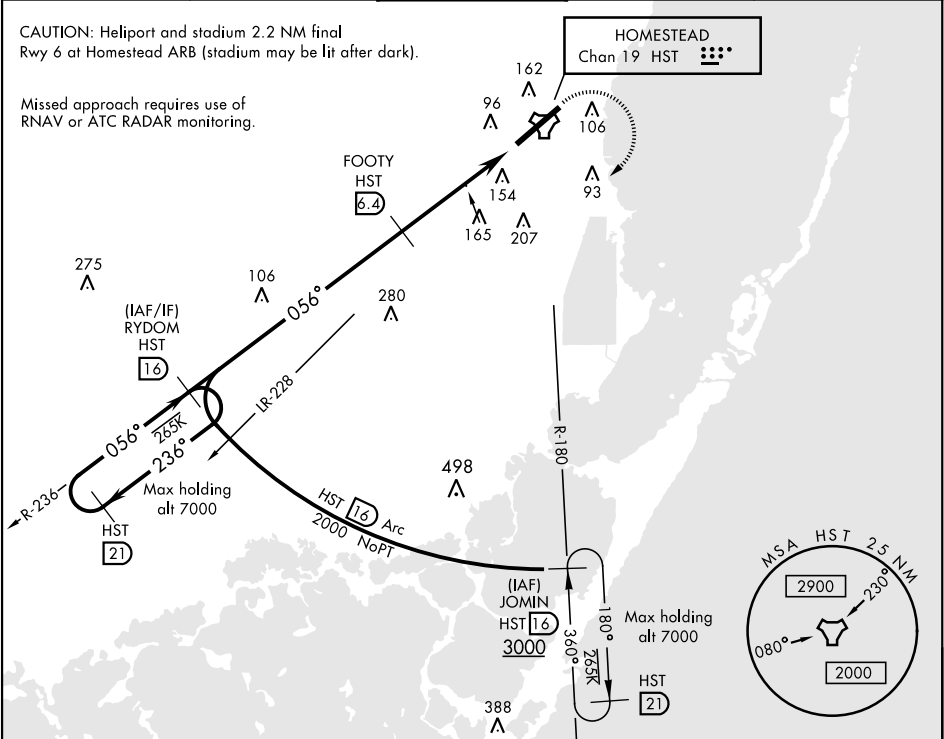
ALSF-1
A1

MISSED APPROACH: Climb to 800 then climbing right turn to 3000 intercept HST TACAN R-180 to JOMIN and hold.

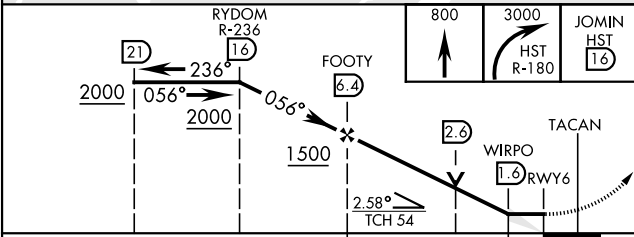
ATIS ★ 132.275 269.9	HOMESTEAD APP CON 123.8 257.675	HOMESTEAD TOWER 133.45 279.55	GND CON 121.75 275.8	CLNC DEL 121.75 275.8
-------------------------	------------------------------------	----------------------------------	-------------------------	--------------------------

CAUTION: Heliport and stadium 2.2 NM final Rwy 6 at Homestead ARB (stadium may be lit after dark).

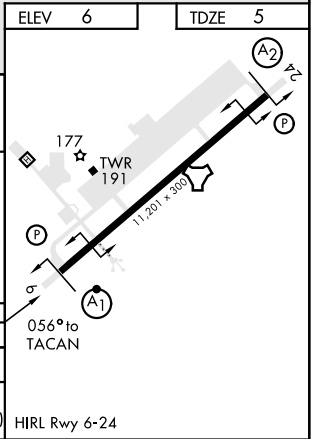
Missed approach requires use of RNAV or ATC RADAR monitoring.



EMERG SAFE ALT 100 NM 15,100



CATEGORY	A	B	C	D	E
S-6 *	460/24 455 (500-½)		460/45 455 (500-¾)		
** CIRCLING	460-1 454 (500-1)	500-1 494 (500-1)	520-1½ 514 (600-½)	580-2 574 (600-2)	780-2¾ 774 (800-2¾)



TACAN Z RWY 6

SE-3, 31 DEC 2020 to 28 JAN 2021

SE-3, 31 DEC 2020 to 28 JAN 2021