

WAAS
CH **90300**
W05A

APP CRS
054°

Rwy Idg
TDZE
Apt Elev

4301
79
79

RNAV (GPS) RWY 5

DELAND MUNI-SIDNEY H TAYLOR FIELD (DED)

RNP APCH.

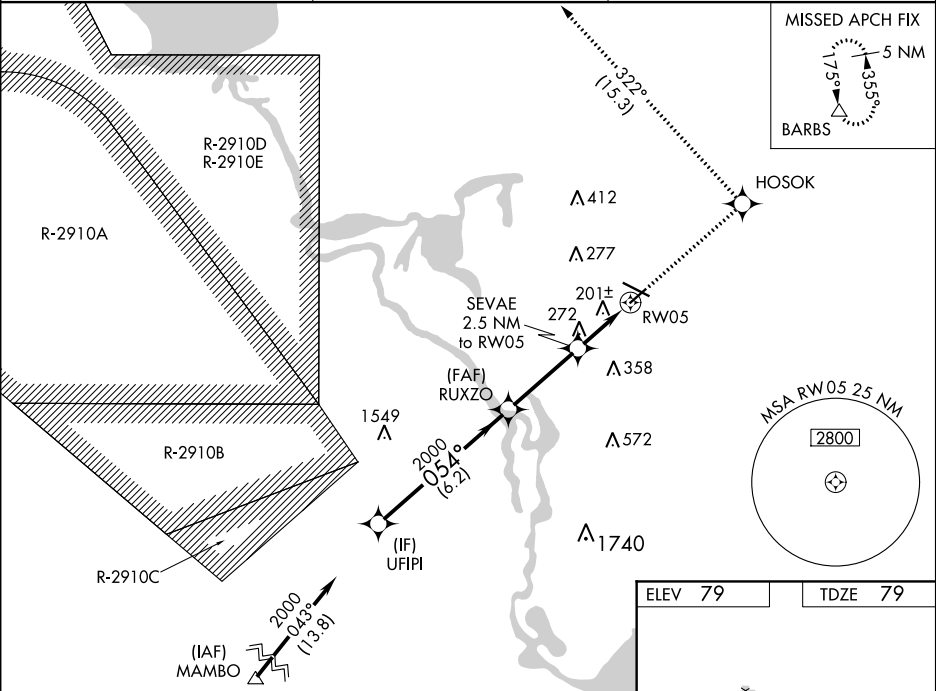
For uncompensated Baro-VNAV systems, LNAV/VNAV NA below -15°C (5°F) or above 54°C (130°F). Rwy 5 helicopter visibility reduction below ¾ SM NA. When local altimeter setting not received, use Daytona Beach Intl altimeter setting and increase all DAs 38 feet and all MDAs 40 feet; increase LPV all Cats, LNAV/VNAV all Cats, and LNAV Cat D visibility ¼ mile.

MISSED APPROACH: Climb to 3000 direct HOSOK and left turn on track 322° to BARBS and hold.

AWOS-3
119.575

DAYTONA APP CON
125.35 322.3

UNICOM
123.075 (CTAF)



VGSI and RNAV glidepath not coincident (VGSI Angle 3.00/TCH 52).

3000 HOSOK BARBS

tr 322°

*LNAV only.

UFIPI RUXZO

2000 054° 2000

GP 3.00° TCH 40

6.2 NM 3.3 NM 1.1 NM 1.4 NM

SEVAE 2.5 NM to RW05

*1.4 NM to RW05

RW05

*900

CATEGORY	A	B	C	D
LPV DA	385-1 306 (400-1)			
LNAV/VNAV DA	577-1¾ 498 (500-1¾)			
LNAV MDA	580-1 501 (600-1)		580-1⅜ 501 (600-1⅜)	

MIRL Rwy 5-23 and 12-30

REIL Rwy 12 and 30