

20254

# RNAV (GPS) RWY 30

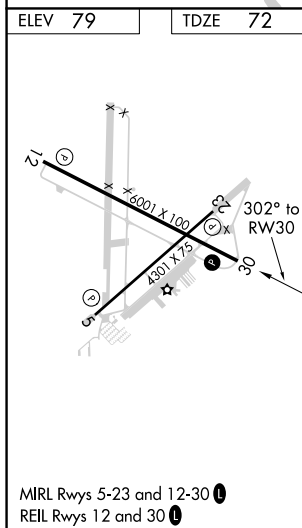
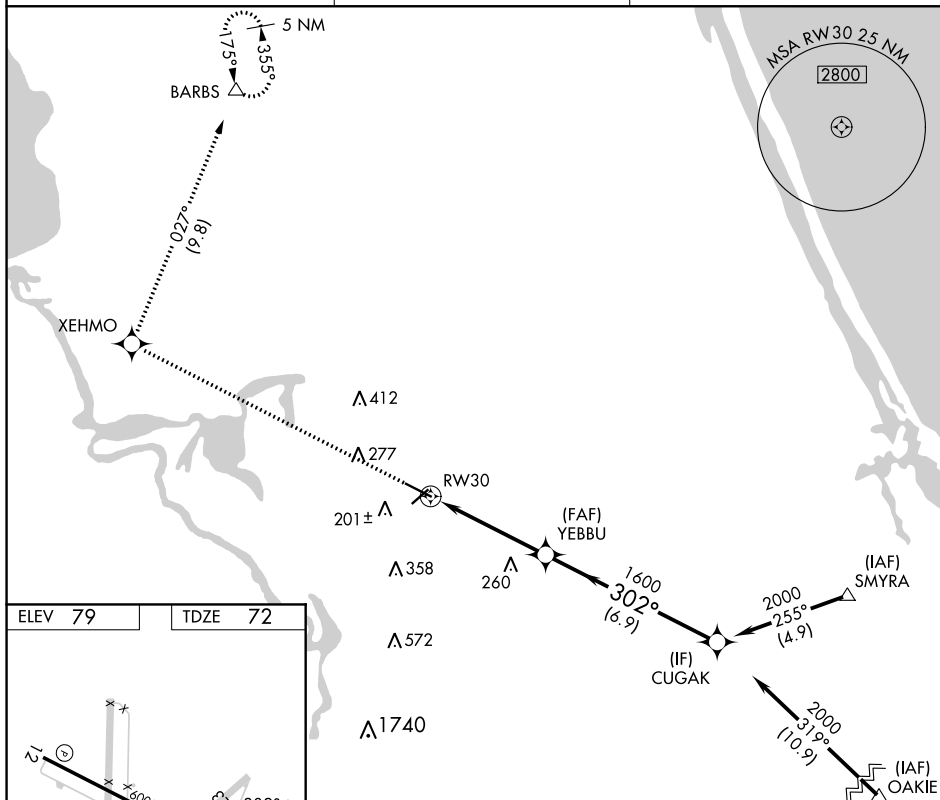
## DELAND MUNI-SIDNEY H TAYLOR FIELD (DED)



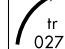

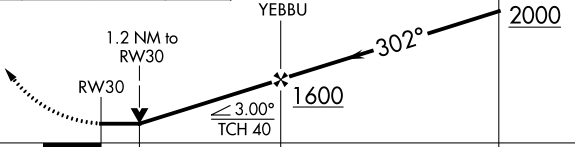
**T** Rwy 30 helicopter visibility reduction below  $\frac{3}{4}$  SM NA. VDP NA when  
**A** using Daytona Beach Intl altimeter setting. When local altimeter setting  
not received, use Daytona Beach Intl altimeter setting and increase all MDAs  
40 feet.

**MISSED APPROACH:** Climb to 3000  
direct XEHMO and right turn on track  
027° direct BARBS and hold.

DAYTONA APP CON  
125.35 322.3

UNICOM  
123.075 (CTAF) **L**



3000	XEHMO				BARBS 	VGSI and descent angles not coincident (VGSI Angle 3.00/TCH 54).	
							
CATEGORY	A		B		C		D
LNAV MDA	500-1 428 (500-1)		500-1¼ 428 (500-1¼)				

DELAND MUNI-SIDNEY H TAYLOR FIELD (DED)  
29°04'N-81°17'W **RNAV (GPS) RWY 30**