

WAAS
CH **45700**
W23A

APP CRS
234°

Rwy Idg
TDZE **78**
Apt Elev **79**

RNAV (GPS) RWY 23

DELAND MUNI-SIDNEY H TAYLOR FIELD (DED)

RNP APCH.

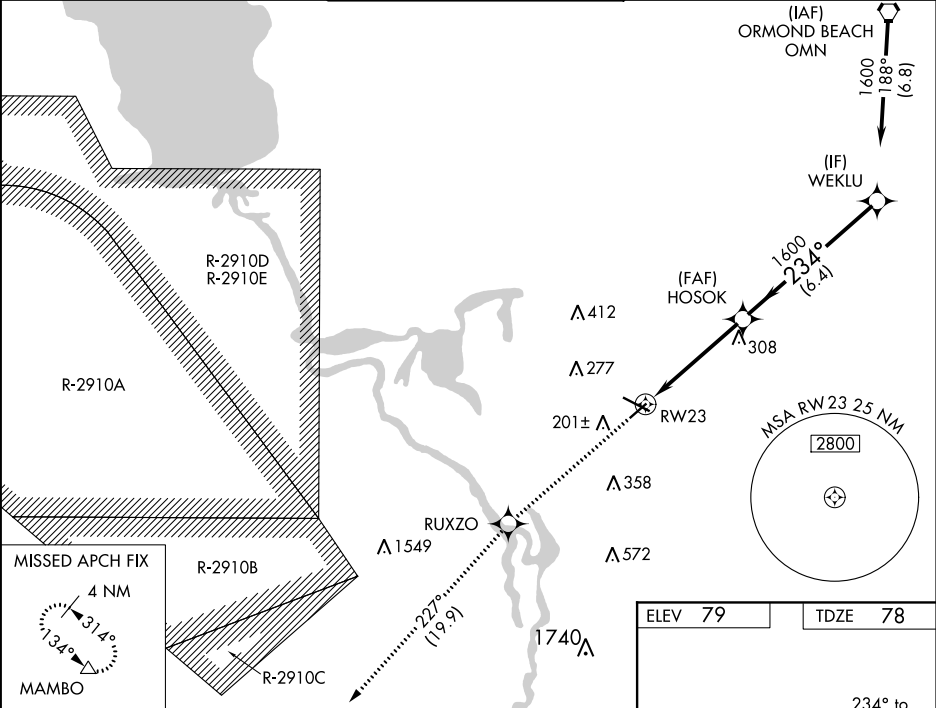
For uncompensated Baro-VNAV systems, LNAV/VNAV NA below -15°C (5°F) or above 54°C (130°F).
Baro-VNAV and VDP NA when using Daytona Beach Intl altimeter setting. Rwy 23 helicopter visibility reduction below ¾ SM NA. When local altimeter setting not received, use Daytona Beach Intl altimeter setting and increase all DA 38 feet and all MDA 40 feet, increase LPV visibility ½ SM all Cats.

MISSED APPROACH:
Climb to 3000 direct RUXZO and on track 227° to MAMBO and hold.

AWOS-3
119.575

DAYTONA APP CON
125.35 322.3

UNICOM
123.075 (CTAF) 0



3000 RUXZO
↑

tr 227°

MAMBO
△

*LNAV only.

*0.9 NM to RW23

RW23

HOSOK 1600

WEKLU 1600

GP 3.00°
TCH 40

CATEGORY	A	B	C	D
LPV DA	374-1 296 (300-1)			
LNAV/VNAV DA	414-1¼ 336 (400-1¼)			
LNAV MDA	420-1 342 (400-1)			

MIRL Rwy 5-23 and 12-30 0

REIL Rwy 12 and 30 0